

# Engineering built smarter. Solutions built to last.

Tuboshu delivers innovative, sustainable engineering built for Africa. Backed by decades of expertise, we design adaptive, high-performance solutions that solve real operational challenges. Our commitment to quality drives every project, supported by a trusted network for maintenance, technical assistance, and ongoing after-sales service.

## Elevate Your Power



**TUBOSHU**

© 2025 Tuboshu. All Rights Reserved

[tuboshu.co.uk](http://tuboshu.co.uk)

Certain specification(s) are based on engineering calculations and are not actual measurements. Specification(s) are provided for comparison purposes only and are subject to change without notice. Specification(s) for your individual Tuboshu equipment will vary based on normal variations in design, manufacturing, operating conditions, and other factors. Pictures of Develon units may show other than standard equipment.

# TUBOSHU



4WD FORKLIFT **7**  
**TFR25-35D**

# TECHNICAL SPECIFICATION

## CHARACTERISTICS

|                      |             |             |             |
|----------------------|-------------|-------------|-------------|
| Manufacturer         | TUBOSHU     | TUBOSHU     | TUBOSHU     |
| Model                | TFR25D      | TFR30D      | TFR35D      |
| Configuration Number | TUHECP25UK  | TUHECP30UK  | TUHECP35UK  |
| Power Type           | Diesel      | Diesel      | Diesel      |
| Rated Capacity       | 2500 kg     | 3000 kg     | 3500 kg     |
| Load Center          | 500 mm      | 500 mm      | 500 mm      |
| Driving Mode         | Sit-On Type | Sit-On Type | Sit-On Type |
| Total Weight (kg)    | 4500        | 4700        | 4950        |

## DIMENSIONS

|  |                |            |             |             |             |
|--|----------------|------------|-------------|-------------|-------------|
| Lifting Height   | H              | mm         | 3000        |             |             |
| Max. Height Extended (fork to the ground, vertical mast) | H1             | mm         | 2265        |             |             |
| Max. Height Extended (with backrest)                     | H2             | mm         | 4200        |             |             |
| Free Lifting Height                                      | H3             | mm         | 160         |             |             |
| Height of Overhead Guard                                 | H4             | mm         | 2420        |             |             |
| Min. Ground Clearance                                    | H5             | mm         | 290         |             |             |
| Height of Backrest                                       | H13            | mm         | 1010        | 1010        | 1155        |
| Overall Length (with/without fork)                       | L/L'           | mm         | 4210/3140   | 4210/3140   | 4214/3144   |
| Wheelbase  | L1             | mm         | 2000        |             |             |
| Front Overhang   | L2             | mm         | 580         |             |             |
| Rear Overhang  | L3             | mm         | 560         |             |             |
| Overall Width  | W1             | mm         | 1640        |             |             |
| Track Width (front/rear)                                 | W3             | mm         | 1230/1280   |             |             |
| Adjustment Range of Fork (outside fork Max/Min)          | W5             | mm         | 1345/250    |             |             |
| Min. Turning Radius                                      | r              | mm         | 3400        |             |             |
| Mast Tilt Angle (fwd/bwd)                                | $\alpha/\beta$ | $^{\circ}$ | 10/12       |             |             |
| Fork Size: Thickness x Width x Length (customizable)     | TxWxL4         | mm         | 40x122x1070 | 40x122x1070 | 40x125x1070 |
| Min. Right Angle Stacking Aisle Width for Pallet         | Ra             | mm         | 3300        |             |             |

## PERFORMANCE

|                                       |  |      |         |    |    |
|---------------------------------------|--|------|---------|----|----|
| Max. Traveling Speeds (laden/unladen) |  | km/h | 18/18   |    |    |
| Lifting Speeds (laden/unladen)        |  | mm/s | 480/520 |    |    |
| Lowering Speeds (laden/unladen)       |  | mm/s | 370/350 |    |    |
| Max. Drawbar Pull (laden)             |  | kN   | 18      |    |    |
| Max. Gradeability, Laden              |  | %    | 24      | 22 | 20 |

## TYRES

|                                     |  |  |               |  |  |
|-------------------------------------|--|--|---------------|--|--|
| Wheels Number front/rear (x=driven) |  |  | 2X2           |  |  |
| Tyre Type                           |  |  | Tubeless Tyre |  |  |
| Tyre Size (front)                   |  |  | 14-17.5-16TL  |  |  |
| Tyre Size (rear)                    |  |  | 10-16.5-10TL  |  |  |

## TRANSMISSION

|                                 |  |      |                     |  |  |
|---------------------------------|--|------|---------------------|--|--|
| Transmission Gears (front/rear) |  | km/h | 1-1 Power Shift M/T |  |  |
|---------------------------------|--|------|---------------------|--|--|

# TECHNICAL SPECIFICATION

## 2.5-3.5 T Wide Views Standard Mast

| MAST MODEL | MAX LIFTING HEIGHT (mm) | LOAD CAPACITY (load center 600mm) (kg) |      |      | LOWERED MAST HEIGHT (mm) | EXTENDED MAST HEIGHT WITH BACK-REST (mm) |       |        | FREE LIFT HEIGHT (mm) | SERVICE WEIGHT (KG) |      |         | MAST TILT ANGLE $\alpha/\beta$ ( $^{\circ}$ ) |
|------------|-------------------------|--|------|------|--------------------------|--|-------|--------|-----------------------|---------------------|------|---------|---|
|            |                         | 2.5T                                   | 3T   | 3.5T |                          | 2.5-3.5 T                                | 2.5 T | 3-3.5T |                       | 2.5-3.5 T           | 2.5T | 3T      |   |
| M200       | 2000                    | 2500                                   | 3000 | 3500 | 1765                     | 3055                                     | 3200  | 150    | 4750                  | 5000                | 5200 | 10°/12° |   |
| M250       | 2500                    | 2500                                   | 3000 | 3500 | 2015                     | 3555                                     | 3700  | 150    | 4810                  | 5060                | 5260 | 10°/12° |   |
| M270       | 2700                    | 2500                                   | 3000 | 3500 | 2115                     | 3755                                     | 3900  | 150    | 4830                  | 5080                | 5280 | 10°/12° |   |
| M300       | 3000                    | 2500                                   | 3000 | 3500 | 2265                     | 4055                                     | 4200  | 150    | 4850                  | 5100                | 5300 | 10°/12° |   |
| M330       | 3300                    | 2500                                   | 3000 | 3500 | 2415                     | 4355                                     | 4500  | 150    | 4910                  | 5160                | 5360 | 10°/12° |   |
| M350       | 3500                    | 2500                                   | 3000 | 3500 | 2515                     | 4555                                     | 4700  | 150    | 4930                  | 5180                | 5380 | 10°/12° |   |
| M370       | 3700                    | 2500                                   | 3000 | 3500 | 2615                     | 4755                                     | 4900  | 150    | 4940                  | 5190                | 5390 | 10°/12° |   |
| M400       | 4000                    | 2500                                   | 3000 | 3500 | 2815                     | 5055                                     | 5200  | 150    | 5010                  | 5260                | 5460 | 10°/6°  |   |
| M425       | 4250                    | 2200                                   | 2900 | 3500 | 2940                     | 5305                                     | 5450  | 150    | 5030                  | 5280                | 5480 | 10°/6°  |   |
| M450       | 4500                    | 2000                                   | 2900 | 3400 | 3065                     | 5555                                     | 5700  | 150    | 5040                  | 5290                | 5490 | 10°/6°  |   |
| M475       | 4750                    | 1800                                   | 2850 | 3350 | 3190                     | 5805                                     | 5950  | 150    | 5090                  | 5340                | 5540 | 10°/6°  |   |
| M500       | 5000                    | 1700                                   | 2600 | 3100 | 3315                     | 6055                                     | 6200  | 150    | 5130                  | 5380                | 5580 | 5°/6°   |   |
| M550       | 5500                    | 1450                                   | 2400 | 2900 | 3615                     | 6555                                     | 6700  | 150    | 5220                  | 5470                | 5670 | 5°/6°   |   |
| M600       | 6000                    | 1300                                   | 2000 | 2500 | 3865                     | 7055                                     | 7200  | 150    | 5270                  | 5520                | 5720 | 5°/6°   |   |

## 2.5-3.5 T Wide Full View 2-Stage Mast

| MAST MODEL | MAX LIFTING HEIGHT (mm) | LOAD CAPACITY (load center 600mm) (kg) |      |      | LOWERED MAST HEIGHT (mm) | EXTENDED MAST HEIGHT WITH BACK-REST (mm) |       |        | FREE LIFT HEIGHT (mm) | SERVICE WEIGHT (KG) |      |         | MAST TILT ANGLE $\alpha/\beta$ ( $^{\circ}$ ) |
|------------|-------------------------|--|------|------|--------------------------|--|-------|--------|-----------------------|---------------------|------|---------|---|
|            |                         | 2.5T                                   | 3T   | 3.5T |                          | 2.5-3.5 T                                | 2.5 T | 3-3.5T |                       | 2.5-3.5 T           | 2.5T | 3T      |   |
| ZM200      | 2000                    | 2500                                   | 3000 | 3500 | 1765                     | 3055                                     | 3200  | 565    | 4770                  | 5020                | 5220 | 10°/12° |   |
| ZM250      | 2500                    | 2500                                   | 3000 | 3500 | 2015                     | 3555                                     | 3700  | 815    | 4830                  | 5080                | 5280 | 10°/12° |   |
| ZM270      | 2700                    | 2500                                   | 3000 | 3500 | 2115                     | 3755                                     | 3800  | 915    | 4850                  | 5100                | 5300 | 10°/12° |   |
| ZM300      | 3000                    | 2500                                   | 3000 | 3500 | 2265                     | 4055                                     | 4200  | 1065   | 4870                  | 5120                | 5320 | 10°/12° |   |
| ZM330      | 3300                    | 2500                                   | 3000 | 3500 | 2415                     | 4355                                     | 4500  | 1215   | 4930                  | 5180                | 5380 | 10°/12° |   |
| ZM350      | 3500                    | 2500                                   | 3000 | 3500 | 2515                     | 4555                                     | 4700  | 1315   | 4950                  | 5200                | 5400 | 10°/12° |   |
| ZM370      | 3700                    | 2500                                   | 3000 | 3500 | 2615                     | 4755                                     | 4900  | 1415   | 4960                  | 5210                | 5410 | 10°/12° |   |
| ZM400      | 4000                    | 2500                                   | 3000 | 3500 | 2815                     | 5055                                     | 5200  | 1615   | 5030                  | 5280                | 5480 | 10°/6°  |   |
| ZM425      | 4250                    | 2200                                   | 2900 | 3500 | 2940                     | 5305                                     | 5450  | 1740   | 5050                  | 5300                | 5500 | 10°/6°  |   |
| ZM450      | 4500                    | 2000                                   | 2900 | 3400 | 3065                     | 5555                                     | 5700  | 1865   | 5060                  | 5310                | 5510 | 10°/6°  |   |
| ZM475      | 4750                    | 1800                                   | 2850 | 3350 | 3190                     | 5805                                     | 5950  | 1990   | 5110                  | 5360                | 5560 | 10°/6°  |   |
| ZM500      | 5000                    | 1700                                   | 2600 | 3100 | 3315                     | 6055                                     | 6200  | 2115   | 5150                  | 5400                | 5600 | 5°/6°   |   |
| ZM550      | 5500                    | 1400                                   | 2400 | 2900 | 3615                     | 6555                                     | 6700  | 2415   | 5240                  | 5490                | 5690 | 5°/6°   |   |
| ZM600      | 6000                    | 1200                                   | 2000 | 2500 | 3865                     | 7055                                     | 7200  | 2665   | 5290                  | 5540                | 5740 | 5°/6°   |   |

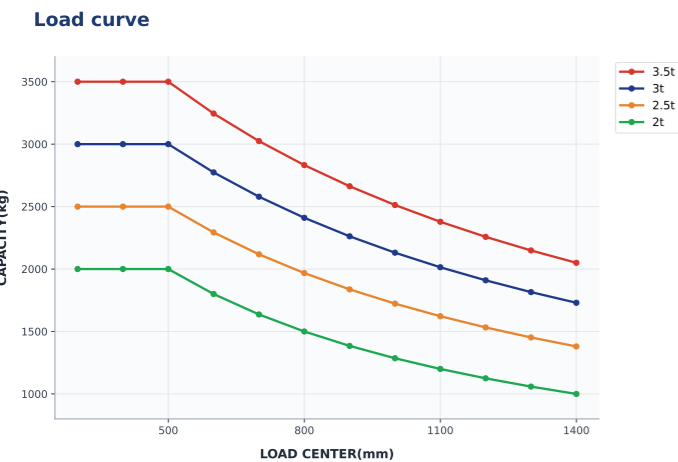
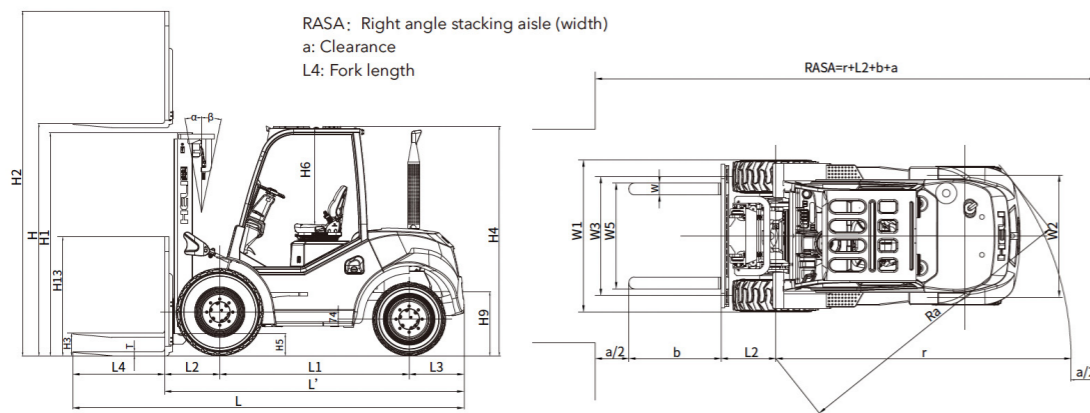
# TECHNICAL SPECIFICATION

## 2.5-3.5 T Wide Full View 3-Stage Mast

| MAST MODEL | MAX LIFTING HEIGHT (mm) |      |      |      | LOAD CAPACITY (load center 600mm) (kg) |       |        |           | LOWERED MAST HEIGHT (mm) | EXTENDED MAST HEIGHT WITH BACK-REST (mm) |      |        | FREE LIFT HEIGHT (mm) | SERVICE WEIGHT (KG) |      |    | MAST TILT ANGLE α/β (°) |
|------------|-------------------------|------|------|------|--|-------|--------|-----------|--------------------------|--|------|--------|-----------------------|---------------------|------|----|-------------------------|
|            | 2.5-3.5 T               | 2.5T | 3T   | 3.5T | 2.5-3.5 T                              | 2.5 T | 3-3.5T | 2.5-3.5 T |                          | 2.5T                                     | 3T   | 3.5T   |                       | 2.5-3.5 T           | 2.5T | 3T |                         |
| ZSM360     | 3600                    | 2400 | 2800 | 3300 | 2015                                   | 4655  | 4800   | 815       | 4930                     | 5180                                     | 5390 | 10°/6° |                       |                     |      |    |                         |
| ZSM400     | 4000                    | 2400 | 2800 | 3300 | 2165                                   | 5055  | 5200   | 965       | 4980                     | 5230                                     | 5430 | 10°/6° |                       |                     |      |    |                         |
| ZSM435     | 4350                    | 2300 | 2800 | 3300 | 2265                                   | 5405  | 5550   | 1065      | 5050                     | 5300                                     | 5510 | 10°/6° |                       |                     |      |    |                         |
| ZSM450     | 4500                    | 2150 | 2700 | 3200 | 2315                                   | 5555  | 5700   | 1115      | 5080                     | 5330                                     | 5540 | 10°/6° |                       |                     |      |    |                         |
| ZSM470     | 4700                    | 1900 | 2500 | 3000 | 2375                                   | 5755  | 5900   | 1175      | 5100                     | 5350                                     | 5560 | 10°/6° |                       |                     |      |    |                         |
| ZSM480     | 4800                    | 1900 | 2500 | 3000 | 2415                                   | 5855  | 6000   | 1215      | 5150                     | 5400                                     | 5610 | 10°/6° |                       |                     |      |    |                         |
| ZSM500     | 5000                    | 1800 | 2400 | 2900 | 2515                                   | 6055  | 6200   | 1315      | 5220                     | 5470                                     | 5670 | 5°/6°  |                       |                     |      |    |                         |
| ZSM550     | 5500                    | 1500 | 2100 | 2900 | 2615                                   | 6455  | 6600   | 1415      | 5320                     | 5570                                     | 5770 | 5°/6°  |                       |                     |      |    |                         |
| ZSM600     | 6000                    | 1150 | 1750 | 2250 | 2815                                   | 7055  | 7200   | 1615      | 5380                     | 5630                                     | 5830 | 5°/6°  |                       |                     |      |    |                         |

## ENGINE MAIN SPECIFICATIONS

| ENGINE MODEL   | Rated power/speed Kw/rpm | Rated torque/speed Nm/rpm | Engine Displacement km/h | Engine cylinder number-cylinder borexstroke | Emission standard   |
|----------------|--------------------------|---------------------------|--------------------------|---|---------------------|
| Mitsubishi S65 | 52/2300                  | 248/1700                  | 4.996                    | 6-94X115                                    | China III/Euro IIIA |



**Note :** The vertical axis stands for load capacity and the horizontal axis stands for load center which is calculated from the front of the fork. The base point of the standard load refers to the center position of the cube with 1000mm length of side. When mast is tilted forward, non standard fork usage or load with over wide goods, load capacity will be reduced. Different load capacity in different load center can be known in time through load chart

# TECHNICAL SPECIFICATION

## Eco-Conscious Performance

The QSF3.8 Euro V power engine of Cummins is equipped with DOC+ DPF + SCR post-treatment technology meeting the most stringent emission standards;

## Smart & Comfortable

### Standard configuration of ZF tiptronic transmission

- Full time free gear control of front 3/ rear 3 is suitable for complex working conditions;
- The proportional valve can control the gear shift accurately and smoothly, which makes driving comfortable;
- Step less speed limit from 5km / h to the maximum speed can be realized and it is suitable for different application;
- Electronic control system and gearbox clutch calibration function offer long-term and efficient operation through smart protection on transmission box.

Through LCD instrument and human-computer interaction, the operator can monitor the truck status in real time.

### Electronic architecture based on CAN bus communication

- More concise wiring harness
- More efficient communication
- greatly reduce Communication failure rate, more reliable

### Vibration shock reduction

When driving under load conditions, the impact caused by uneven surface is greatly absorbed, and the vibration is effectively reduced.

### Vibration and noise reduction

When driving under load condition, the impact noise caused by uneven surface is greatly reduced.

### Reduced driving fatigue

During the emergency stop operation during the load lowering process, the vibration and driving fatigue caused by inertia impact can be effectively reduced, and the driving safety can be improved.

## Operator Safety & System Protection

- Operator present system (after the driver leaves the seat accidentally, walking and lifting function of the whole truck is terminated) prevents the potential safety hazards caused by misoperation.
- When parking brake works, truck travel function is prohibited and thus the safety of driving operation is improved;
- Start protection function, fingertip operation system and anti-restart protection function from non-neutral gear ensure operation safety;
- The truck is equipped with large capacity air filter with safety filter element and pressure alarm function;
- The optimal design of power suspension increases the limit of impact to protect the power assembly from accidental impact;
- Truck safety warning: reverse image system, warning light, etc. (optional)