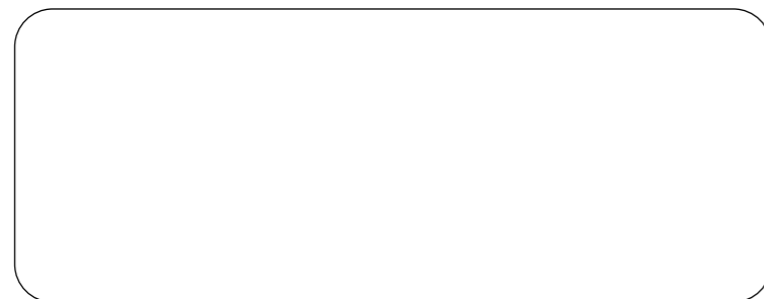


Engineering built smarter. Solutions built to last.

Tuboshu delivers innovative, sustainable engineering built for Africa. Backed by decades of expertise, we design adaptive, high-performance solutions that solve real operational challenges. Our commitment to quality drives every project, supported by a trusted network for maintenance, technical assistance, and ongoing after-sales service.

Elevate Your Power

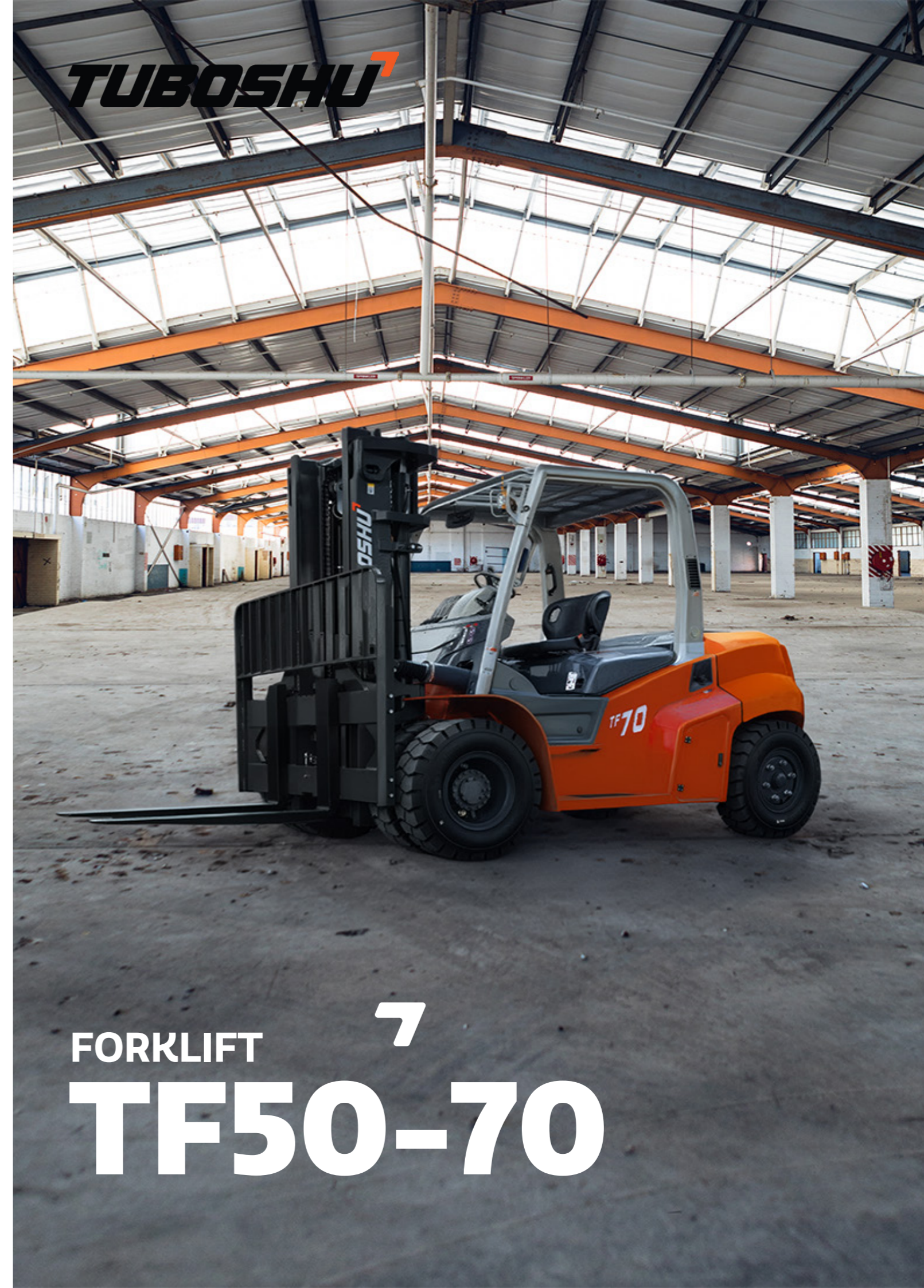


TUBOSHU⁷

© 2025 Tuboshu. All Rights Reserved

tuboshu.co.uk

Certain specification(s) are based on engineering calculations and are not actual measurements. Specification(s) are provided for comparison purposes only and are subject to change without notice. Specification(s) for your individual Tuboshu equipment will vary based on normal variations in design, manufacturing, operating conditions, and other factors. Pictures of Develon units may show other than standard equipment.



FORKLIFT⁷
TF50-70

TECHNICAL SPECIFICATION

CHARACTERISTICS

Manufacturer	TUBOSHU	
Model	TF50D	TF70D
Configuration Number	TUHEPCD50UK	TUHEPCD70UK
Rated Capacity (Q)	5000 kg	7000 kg
Load Center (c)	600 mm	

TYRES

Wheel Number (front/rear)	4X/2
Tyre Type	Pneumatic Tyre
Tyre Size (front)	8.25-15-14PR
Tyre Size (rear)	8.25-15-14PR

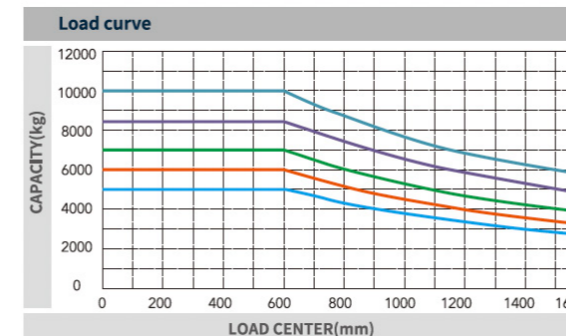
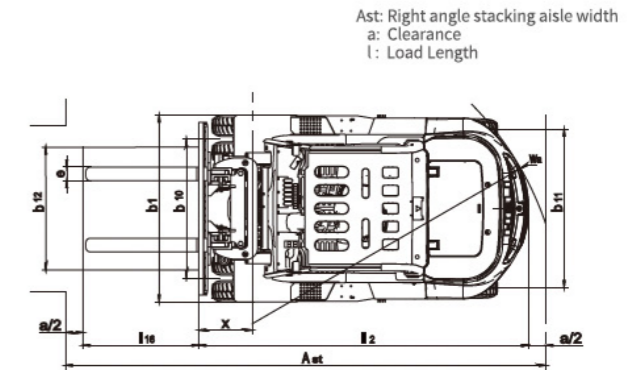
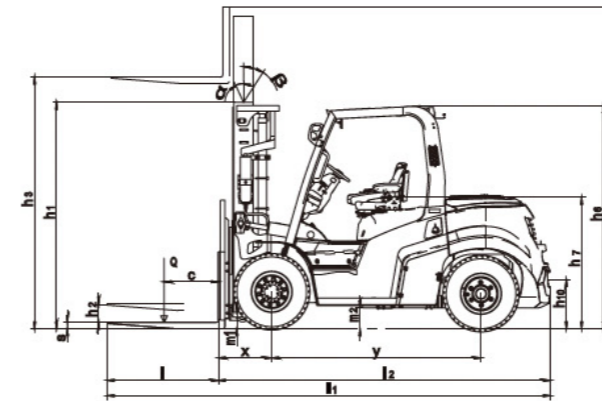
TECHNICAL DATA

DIMENSIONS			TF50	TF70
Mast tilt angle (forward/backward)	α/β	°	6/12	
Height (mast lowered)	h1	mm	2480	
Free lifting height	h2	mm	155	160
Lifting height (standard)	h3	mm	3000	
Max. height, extended (with backrest)	h4	mm	4400	
Height of overhead guard	h6	mm	2450	
Seat height relating to SIP (to ground)	h7	mm	1435	
Towing coupling height	h10	mm	535	
Ground clearance (between mast)	m1	mm	180	
Overall length (with fork)	L1	mm	4705	4865
Overall length (without fork)	L2	mm	3485	3645
Front overhang	x	mm	575	585
Wheelbase	y	mm	2300	
Overall width	b1	mm	2045	
Distance across fork-arms, Max./Min.	b5	mm	300-1845	
Fork size: thickness x width x length	s/e/l	mm	55x150x1220	65x150x1220
Tread, front	b10	mm	1520	
Tread, rear	b11	mm	1700	
Right angle stacking aisle width for pallet 1000X1200 crossways	Ast	mm	5000	5125
Min. outside turning radius	Wa	mm	3225	3340
TRANSMISSION				
Transmission Type	Hydraulic Transmission/Electro-Hydraulic Directional Change			
Transmission No. of Speed	2/2			
Service Brake	Powered Brake Pedal Type			
Parking Brake	Mechanical Hand Lever Type			
Operating Pressure for Attachments	mpa	20.5		
Battery Voltage/Capacity	V/Ah	2x12/80		
PERFORMANCE DATA				
Travel Speed (laden/unladen)	km/h	29/31		
Lift Speed (laden/unladen)	mm/s	480/520		
Lowering Speed (laden/unladen)	mm/s	without load \geq 300, with load \leq 600		
Max. Drawbar Pull (laden/unladen)	kN	62		
Max. Gradeability (laden/unladen)	%	42/20	32/20	
Weight	kg	8320	9440	

TECHNICAL SPECIFICATION

ENGINE SPECIFICATIONS

		OPTION 1	OPTION 2	OPTION 3
Engine Manufacturer/Model		Quanchai 4J1-115C32	Cummins QSF3.8	MITSUBISHI S65-T
Rated Power/Speed	kW/rpm	85/2200	86/2200	63.9/2300
Max. Torque/Speed	Nm/rpm	50/1600	470/1100-1700	285/1700
Cylinder No. - Bore x Stroke		105x124	4-102x115	6-94X120
Engine Displacement	L	4.3	3.8	4.996
Configuration Number		QCG3	CU2G3	M1G3
Travel Speed (laden/unladen)	km/h	28/31	26/30	26/30
Lift Speed (laden/unladen)	mm/s	480/520	480/520	440/460
Lowering Speed (laden/unladen)	mm/s	without load \geq 300, with load \leq 600		
Max. Drawbar Pull (laden/unladen)	kN	62	62	40
Max. Gradeability (laden/unladen)	%	30/20	30/20	19/20
Weight	kg	9440	9440	9440



Note: The vertical axis stands for load capacity and the horizontal axis stands for load center which is calculated from the front surface of the forks to the gravity of the standard load. The standard load means a cubic with 1200mm edge length. When mast is tilted forward, using non-standard forks or loading large goods, the load capacity will be reduced. The load capacity of standard mast at different load center can be known from this load chart.

TECHNICAL SPECIFICATION

5T/7T-WIDE VIEW MAST

MAST MODEL	MAX FORK HEIGHT mm	LOAD CAPACITY (load center 600mm) (kg)		MAST HEIGHT LOWERED (mm)	SERVICE WEIGHT (KG)		MAST TILT ANGLE α/β (°)
		50D-DFT	70D-DFT		50D-DFT	70D-DFT	
	50/70D-DFT	50D-DFT	70D-DFT	50/70D-DFT	50D-DFT	70D-DFT	50/70D-DFT
M200	2000	5000	7000	2080	8325	9769	6/12
M250	2500	5000	7000	2230	8389	9791	6/12
M270	2700	5000	7000	2330	8421	9811	6/12
M300	3000	5000	7000	2480	8470	9860	6/12
M330	3300	5000	7000	2630	8519	9909	6/12
M350	3500	5000	7000	2730	8551	9941	6/12
M375	3750	5000	7000	2855	8592	9982	6/12
M400	4000	5000	7000	3030	8758	10148	6/12
M425	4250	5000	7000	3155	8798	10188	6/12
M450	4500	5000	7000	3280	8839	10229	6/12
M475	4750	5000	7000	3405	8880	10270	6/6
M500	5000	5000	7000	3530	8920	10310	6/6
M550	5500	4750	6600	3830	9114	10504	6/6
M600	6000	4400	6400	4080	9196	10586	6/6

5T/7T-FULL FREE 2-STAGE MAST

MAST MODEL	MAX FORK HEIGHT mm	LOAD CAPACITY (load center 600mm) (kg)		MAST HEIGHT LOWERED (mm)	FREE LIFT (with bakrest) (mm)	SERVICE WEIGHT (KG)		MAST TILT ANGLE α/β (°)
		50D-DFT	70D-DFT			50D-DFT	70D-DFT	
	50/70D-DFT	50D-DFT	70D-DFT	50/70D-DFT	50/70D-DFT	50D-DFT	70D-DFT	50/70D-DFT
ZM250	2500	5000	7000	2210	840	8509	9899	6/12
ZM270	2700	5000	7000	2310	940	8546	9936	6/12
ZM300	3000	5000	7000	2460	1090	8603	9993	6/12
ZM330	3300	5000	7000	2610	1240	8660	10050	6/12
ZM350	3500	5000	7000	2710	1340	8697	10087	6/12
ZM375	3750	5000	7000	2835	1465	8745	10135	6/12
ZM400	4000	5000	7000	3010	1640	8920	10310	6/12
ZM425	4250	5000	7000	3135	1765	8972	10362	6/12
ZM450	4500	5000	7000	3260	1890	9015	10405	6/12
ZM475	4750	5000	7000	3385	2015	9062	10452	6/6
ZM500	5000	5000	7000	3510	2140	9099	10489	6/6
ZM550	5500	4750	6600	3810	2440	9319	10709	6/6
ZM600	6000	4400	6400	4060	2690	9414	10804	6/6

5T/7T-FULL FREE 3-STAGE MAST

MAST MODEL	MAX FORK HEIGHT mm	LOAD CAPACITY (load center 600mm) (kg)		MAST HEIGHT LOWERED (mm)	FREE LIFT (with bakrest) (mm)	SERVICE WEIGHT (KG)		MAST TILT ANGLE α/β (°)
		50D-DFT	70D-DFT			50D-DFT	70D-DFT	
	50/70D-DFT	50D-DFT	70D-DFT	50/70D-DFT	50/70D-DFT	50D-DFT	70D-DFT	50/70D-DFT
ZSM360	3600	4500	6200	2335	910	9153	10443	6/6
ZSM400	4000	4500	6200	2460	1040	9213	10503	6/6
ZSM435	4350	4500	6200	2585	1156	9271	10561	6/6
ZSM480	4800	4500	6200	2740	1310	9468	10758	6/6
ZSM500	5000	4500	6200	2805	1380	9499	10789	6/6
ZSM540	5400	4200	6200	2940	1510	9568	10858	6/6
ZSM600	6000	4000	5600	3135	1710	9657	10947	6/6
ZSM650	6500	3500	5000	3405	1975	9746	11036	6/6
ZSM700	7000	3200	4500	3510	2085	9799	11089	6/6

Note: The service weight in the table is the weight of the truck assembled with ISUZU engine. When the installation method of fork carrier or attachment is a series axis type, the standard configuration is without backrest. When it is a hook type, the backrest is standard configuration.

*5T: the free lift without backrest 260mm increased, **7T: the free lift without backrest 180mm increased

TECHNICAL SPECIFICATION

CONFIGURATION 1

PARTS		
Packing Method	HELI packing	◇
	Neutral packing	-
Economic and Energy Saving	Load sense steering	◇
	Double pump confluence	◇
Intelligent Security	Hydraulic power braking	◇
	Tilting cylinder with self-locking valve	◇
	Reversing buzzer	◇
	Reverse radar and camera	-
	Overspeed alarm (speed limit value adjustable)	-
	OPS (Only for driving)	-
	OPS (Driving and lifting)	-
	OPS (Special for Australia)	-
	Electric power switch	-
	Engine oil pressure alarm	◇
	Oil water separator indicator	◇
	Charging indicator	◇
	Water temperature gauge	◇
	Neutral start switch	◇
	Fire extinguisher	-
	Spark arrester	-
	Fuel cap with lock	◇
Engine hood locking device	-	
Reliability	Drum brake drive axle	◇
	Wet-type brake drive axle (mandatory cooling)	-
	Hydraulic oil radiator	-
	9 inches double filter element air filter(with pressure alarm)	◇
	Self discharging ash filter	-
Comfortable and convenient	Dry-type double air filter	-
	Electro-hydraulic reversing	◇
	Steering wheel with knob (HELI packing)	◇
	Steering wheel without knob (HELI packing)	-
	Full hydraulic power steering	◇
	Lowering buffering for rear lifting cylinder, upper buffering for front lifting cylinder	◇
	Speed limiting valve for lifting oil circuit	◇
	Man-machine interactive liquid crystal instrument	◇
	Fan	-
	USB interface	◇
Get on/off handle	◇	

“◇” Standard | “-” Optional

Note: (1) 5-6t: the free lift without backrest 260mm increased, (2) 7t: the free lift without backrest 180mm increased.

TECHNICAL SPECIFICATION

CONFIGURATION 2

PARTS		
Cab/Windshield	Front windshield (with wiper)	-
	Rear windshield (without wiper)	-
	Glass ceiling	-
	Panel mounted cab	-
	Single cooling air conditioner	-
	Cold and warm air conditioner	-
	Heater	-
Lifting System	Basic wide view mast	◇
	Two stages full free wide view mast	-
	Three stages full free wide view mast	-
	Hook type of fork carriage (5/6/7t)	◇
	Hydraulic fork positioner (8.5/10t)	◇
	Widened fork carriage	-
	Backrest (5/6/7t)	◇
	Non standard fork and attachment	-
Lights	LED lights for whole truck	◇
	LED rear working lights	-
	Rear side of blue light	-
	Three sides of blue strip light	-
	Three sides of red strip light	-
	LED flashing warning light (assembly type)	-
	LED rotary warning light (assembly type)	-
	LED rotary buzzerlight (assembly type)	-
Tyres	Pneumatic tyre	◇
	Solid tyre	-
Others	Metric thread	◇
	Middle exhaust	◇
	High exhaust	-
	Counterweight with protective net	◇
	Counterweight and mast sling	-
	Steering cylinder sleeve	◇
	Tilting cylinder sleeve	-
	No universal Key	◇
	Universal keys (2 pieces)	-
	Universal keys (4 pieces)	-
	Traction device	◇
	Driver's tool kits	◇
	Customized color	-

“◇” Standard | “-” Optional

Reliable Drive System

The transmission box designed and manufactured by TUBOSHU specially for the model is equipped on the truck. As reliable transmission system produced by TUBOSHU, it has been validated by over twenty years experience in the world market. Meanwhile, various ancillary devices of the power system ensure the reliability effectively.

Through LCD instrument and good human-computer interaction, the operator can monitor the truck status in real time.

Standard configuration of oil cylinder lower buffer, comfortable operation.

Multi system joint optimization design (active noise reduction of engine, transmission box, axle and hydraulic oil pump, application of sealing sound insulation materials of the whole truck) reduces truck noise.

Efficient & Safe

- Standard LED lamps, energy saving, more brighter, long service life.
- Load sensing steering and dual pump confluence technology, energy consumption reduce by 10%.
- The truck is equipped with large capacity air filter with safety filter element and pressure alarm function;
- The optimal design of power suspension increases the limit of limit impact to protect the power assembly from accidental impact;
- Truck safety warning: reverse image system, warning light, etc. (optional)

Reliable Quality

TUBOSHU has been committed to the research of truck reliability for many years, and the core parts have been verified by the market for a long time. The truck goes through high standard reliability test before marketing, long-time quality tracking and verification after marketing, and strict control of various performance indicators.

- The CAE forward design improves the strength of structural parts;
- Wet braking with forced oil cooling radiator ensures the stability and reliability of braking performance under extreme conditions;
- High performance cooling system ensures the heat dissipation performance of the whole truck.