

# Engineering built smarter. Solutions built to last.

Tuboshu delivers innovative, sustainable engineering built for Africa. Backed by decades of expertise, we design adaptive, high-performance solutions that solve real operational challenges. Our commitment to quality drives every project, supported by a trusted network for maintenance, technical assistance, and ongoing after-sales service.

## Elevate Your Power



# TUBOSHU<sup>7</sup>

© 2025 Tuboshu. All Rights Reserved

[tuboshu.co.uk](http://tuboshu.co.uk)

Certain specification(s) are based on engineering calculations and are not actual measurements. Specification(s) are provided for comparison purposes only and are subject to change without notice. Specification(s) for your individual Tuboshu equipment will vary based on normal variations in design, manufacturing, operating conditions, and other factors. Pictures of Develon units may show other than standard equipment.



# TUBOSHU<sup>7</sup>

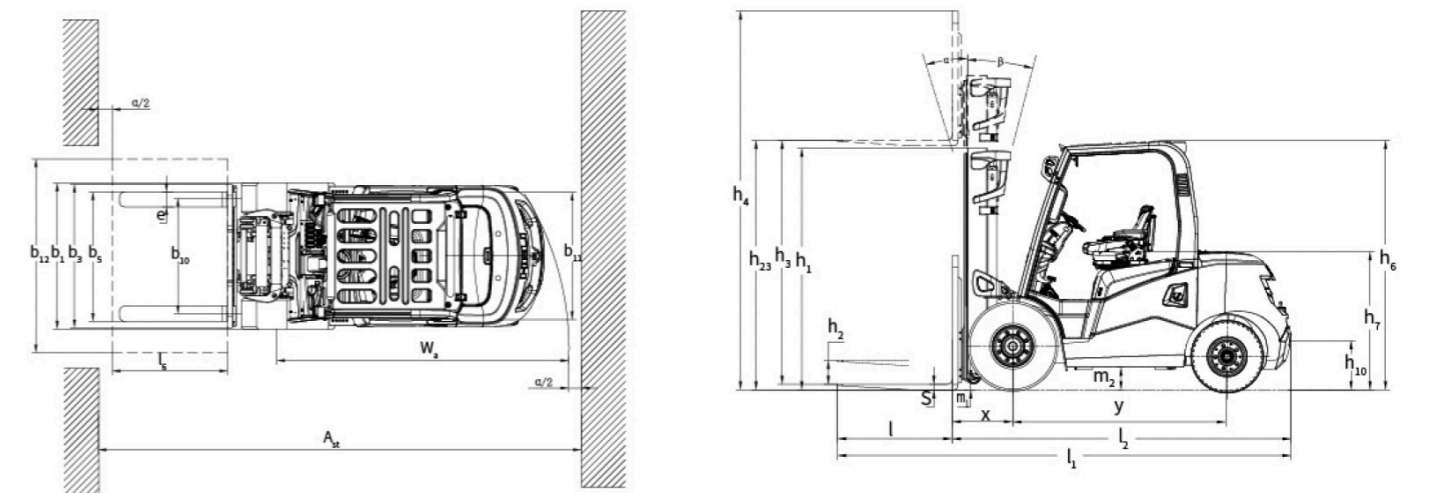
# ELECTRIC FORKLIFT <sup>7</sup> TF40-50E

# TECHNICAL SPECIFICATION

CHARACTERISTICS					
Manufacturer	TUBOSHU				
Model		TF40E	TF45E	TF50E	
Configuration Number		TUHECPD40UK	TUHECPD45UK	TUHECPD50UK	
Rated Capacity	Q	kg	4000	4500	5000
Load Center Distance	C	mm	500		
Power Mode	Lithium Battery				
Driving Mode	Seated				
Front Overhang	x	mm	560		
Wheelbase	y	mm	2100		
DIMENSION PARAMETER					
			TF40E	TF45E	TF50E
Mast tilt angle (forward/backward)	$\alpha/\beta$	°	6/12	6/12	6/12
Height (mast lowered)	h1	mm	2275	2275	2275
Free lifting height	h2	mm	150	150	150
Lifting height (standard)	h3	mm	3000	3000	3000
Max. height, extended (with backrest)	h4	mm	4250	4250	4250
Height of overhead guard	h6	mm	2350	2350	2350
Seat height relating to SIP (to ground)	h7	mm	1080	1080	1080
Towing coupling height	h10	mm	430	430	430
Overall length (with fork)	l1	mm	4255	4275	4325
Overall length (without fork)	l1	mm	3185	3205	3255
Overall width	b1	mm	1480	1480	1480
Fork size: thickness x width x length	s/e/l	mm	50x150x1070	50x150x1070	50x150x1070
Fork carriage, according to ISO 2328			III	III	III
Distance across fork-arms, Max./Min.	b5	mm	1340/300	1340/300	1340/300
Ground clearance (laden, between mast)	m1	mm	150	150	150
Ground clearance (center of wheelbase)	m2	mm	230	230	230
Right angle stacking aisle width for pallet 1000x1200mm crossways	Ast	mm	4610	4640	4690
Right angle stacking aisle width for pallet 800x1200mm lengthways	Ast	mm	4810	4840	4890
Min. outside turning radius	Wa	mm	2850	2880	2930
WEIGHT					
			TF40E	TF45E	TF50E
Total weight		kg	5890/5560	6245/5915	6600/6270
Axle load (laden, front/rear)		kg	8990/900	9720/1025	10430/1170
Axle load (unladen, front/rear)		kg	2970/2920	2950/3295	2900/3700
TYRES					
			TF40E	TF45E	TF50E
Tyre type			Solid tyre	Solid tyre	Solid tyre
Tyre size, front			8.25-15	8.25-15	300-15
Tyre size, rear			7.00-12	7.00-12	7.00-12
Wheels, number front/rear (x=driven wheels)			2X/2 (Dual tyre 4X/2)	2X/2 (Dual tyre 4X/2)	2X/2 (Dual tyre 4X/2)
Tread, front	b10	mm	1180	1180	1180
Tread, rear	b11	mm	1190	1190	1190

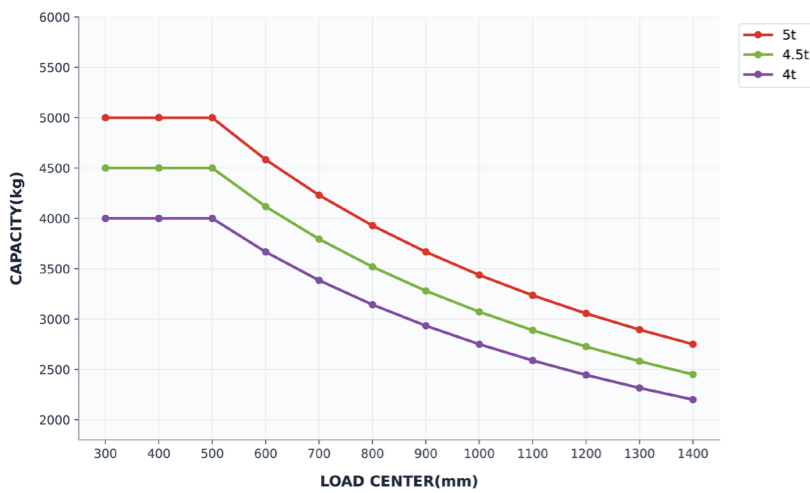
# TECHNICAL SPECIFICATION

PERFORMANCE DATA		TF40E	TF45E	TF50E
Travel speed (laden/unladen)	km/h	18/19	18/19	18/19
Lift speed (laden/unladen)	m/s	450/500	420/500	390/500
Lowering speed (laden/unladen)	m/s	450/450	450/450	450/450
Max. drawbar pull (laden/unladen)	N	23/20	23/20	23/20
Max. gradeability (laden/unladen)	%	19/20	18/20	17/20
Acceleration Time/10 m (Laden/Unladen)	s	5.5/5.2	5.6/5.3	5.9/5.0
BATTERY		TF40E	TF45E	TF50E
Voltage/capacity (Standard/Optional)	V/Ah	Standard 153.6/230 Optional 153.6/280, 153.6/346		
Mass (Min./Max.)	kg	325/455	325/455	325/455
MOTOR & CONTROLLER		TF40E	TF45E	TF50E
Power of driving motor (S2-60min)	kW	25	25	25
Power of lifting motor (S3-15%)	kW	20	20	20
Control mode of driving motor		MOS tube / AC	MOS tube / AC	MOS tube / AC
Control mode of lifting motor		MOS tube / AC	MOS tube / AC	MOS tube / AC
Service Brake/ Parking Brake		Hydraulic power assisted braking / mechanical-ratchet type		
Operating Pressure for Attachments		14		
CHARGER		APSP-150V100A-S1		APSP-150V200A-S1
Charger Model		Three-phase four-wiring type		Three-phase four-wiring type
Wiring type		Three-phase four-wiring type		Three-phase four-wiring type
Power of charger	kVA	≤20	≤40	
Air switch model of upper level power	A	63	80	
Input voltage range	Vac	380±15%	380±15%	
Protection level		IP20	IP20	
Working ambient temperature	°C	-20~+45	-20~+45	
Plugs and sockets		Charger meeting national standard		Charger meeting national standard
Charger note		Full charging time = required charging capacity / charging current + 0.2h. For example: battery capacity is 153.6V/230Ah, discharging state alarmed by instrument, charger is 100A, full charging time is 230×0.9/100+0.2 ≈ 2.27h		Full charging time = required charging capacity / charging current + 0.2h. For example: battery capacity is 153.6V/230Ah, discharging state alarmed by instrument, charger is 100A, full charging time is 230×0.9/100+0.2 ≈ 2.27h



# TECHNICAL DATA

Load curve



**Note :** The vertical axis stands for load capacity and the horizontal axis stands for load center which is calculated from the front of the fork. The base point of the standard load refers to the center position of the cube with 1000mm length of side. When mast is tilted forward, non standard fork usage or load with over wide goods, load capacity will be reduced. Different load capacity in different load center can be known in time through load chart

## CONFIGURATIONS

Category	Configuration	Status
Safety	Steering deceleration	Standard
	Rear handle with horn for truck reversing	Standard
	Overspeed alarm (5km/h)	Optional
	Overspeed alarm (8km/h)	Optional
	Overspeed alarm (10km/h)	Optional
	Speed limit (no ultimate limit type)	Optional
	OPS (travelling+lifting+tilting+attachment) (lowering is not included)	Standard
	Full set of OPS	Optional
	Safety switch for seat belt	Standard
	Hydraulic valve overload protection device	Standard
	Dry powder extinguisher (0.5kg)	Optional
	Dry powder extinguisher (2kg)	Optional
	Backward buzzer	Standard
	Reversing speaker (Chinese)	Optional
	Electronic upper buffering	Optional
	Wide-angle central rear view mirror	Standard
	Rearview mirror on two sides + Center wide angle rearview mirror	Optional
	Reverse radar (4 probes)	Optional
Reversing image (1 camera + 4 probes)	Optional	
Comfort	Semi-enclosure seat	Standard
	Full suspension seat	Optional
	1 USB interface (5V/1A)	Standard
	Super low torque steering unit	Standard
	Mechanical control valve	Optional
Fan	Optional	

## CONFIGURATIONS

Category	Configuration	Status
Cab/ Windshields	Panel mounted cab (with fan and wiper)	Optional
	Heater	Optional
	Air conditioner only for cooling	Optional
	Air conditioner only for cooling + heater	Optional
	Front windshield (with wiper/no blow can)	Optional
Rear windshield	Optional	
Top windshield (without fan)	Optional	
Lights	LED rear working lamp (one)	Optional
	Rear LED red/blue spot lamp	Optional
	Left, right and rear blue bar	Optional
	Fixed type LED flicker warning lamp	Standard
	Fixed type LED rotating warning lamp	Optional
Others	Fixed type LED rotating buzzer warning lamp	Optional
	Sleeve for steering cylinder	Standard
	Sleeves for steering cylinder and tilting cylinder	Optional
FICS standard type (domestic)	Optional	

# MAST PARAMETERS

Wide View standard Mast

Mast Model	Max Lift Height (mm)	Load Capacity (kg)			Height Mast Lowered (mm)	Free Lift w/ Backrest (mm)	Service Weight (kg)			Tilt Angle α/β (°)
		4-5 T	4 T	4.5 T			5 T	4 T	4.5 T	
M250	2500	4000	4500	5000	1990	150	5825	6180	6535	6/12
M300	3000	4000	4500	5000	2240	150	5890	6245	6600	6/12
M330	3300	4000	4500	5000	2390	150	5930	6285	6640	6/12
M350	3500	4000	4500	5000	2490	150	5855	6210	6565	6/12
M370	3700	4000	4500	5000	2590	150	5980	6335	6690	6/12
M400	4000	4000	4500	5000	2790	150	6070	6425	6780	6/12
M425	4250	4000	4500	5000	2915	150	6105	6460	6815	6/6
M450	4500	3800/*4000	4300/*4500	4700/*5000	3040	150	6135	6490	6845	6/6
M475	4750	3700/*4000	4200/*4500	4500/*5000	3165	150	6165	6520	6875	6/6
M500	5000	3500/*3700	4000/*4200	4250/*4600	3290	150	6200	6555	6910	6/6
M550	5500	3200/*3400	3600/*4000	4000/*4200	3590	150	6315	6670	7025	6/6
M600	6000	*3200	*3600	*3800	3840	150	6380	6735	7090	6/6

Wide View Full Free 2-Stage Mast

Mast Model	Max Lift Height (mm)	Load Capacity (kg)			Height Mast Lowered (mm)	Free Lift w/ Backrest (mm)	Service Weight (kg)			Tilt Angle α/β (°)
		4-5 T	4 T	4.5 T			5 T	4 T	4.5 T	
ZM250	2500	4000	4500	5000	1990	785	5828	6183	6538	6/12
ZM300	3000	4000	4500	5000	2240	1035	5883	6238	6593	6/12
ZM330	3300	4000	4500	5000	2390	1185	5923	6278	6633	6/12
ZM350	3500	4000	4500	5000	2490	1285	5948	6303	6658	6/12
ZM370	3700	4000	4500	5000	2590	1385	5973	6328	6683	6/12
ZM400	4000	4000	4500	5000	2790	1585	6063	6418	6773	6/12
ZM425	4250	4000	4500	5000	2915	1710	6103	6458	6813	6/6
ZM450	4500	3800/*4000	4300/*4500	4700/*5000	3040	1835	6143	6498	6853	6/6
ZM475	4750	3700/*4000	4200/*4500	4500/*5000	3165	1960	6183	6538	6893	6/6
ZM500	5000	3500/*3700	4000/*4200	4250/*4600	3290	2085	6218	6573	6928	6/6
ZM550	5500	3200/*3400	3600/*4000	4000/*4200	3590	2385	6333	6688	7043	6/6
ZM600	6000	*3200	*3600	*3800	3840	2635	6383	6738	7093	6/6

Wide View Full Free 3-Stage Mast

Mast Model	Max Lift Height (mm)	Load Capacity (kg)			Height Mast Lowered (mm)	Free Lift w/ Backrest (mm)	Service Weight (kg)			Tilt Angle α/β (°)
		4-5 T	4 T	4.5 T			5 T	4 T	4.5 T	
ZSM360	3600	3800/*4000	4350/*4500	4800/*5000	1940	730	6048	6403	6758	6/6
ZSM400	4000	3800/*4000	4350/*4500	4800/*5000	2080	870	6098	6453	6808	6/6
ZSM435	4350	3800/*4000	4350/*4500	4800/*5000	2190	980	6143	6498	6853	6/6
ZSM450	4500	3800/*4000	4350/*4500	4800/*5000	2240	1030	6158	6513	6868	6/6
ZSM470	4700	3500/*3800	4000/*4200	4500/*4800	2305	1095	6183	6538	6893	6/6
ZSM500	5000	3250/*3500	3800/*4000	4200/*4500	2440	1230	6233	6588	6943	6/6
ZSM540	5400	3250/*3400	3400/*3700	3800/*4200	2590	1380	6343	6698	7053	6/6
ZSM600	6000	*3200	*3400	*3800	2790	1580	6413	6768	7123	6/6
ZSM650	6500	*2500	*2800	*3200	2990	1780	6488	6843	7198	6/6
ZSM700	7000	*1800	*2000	*2500	3165	1955	6553	6908	7263	6/6