

Engineering built smarter. Solutions built to last.

Tuboshu delivers innovative, sustainable engineering built for Africa. Backed by decades of expertise, we design adaptive, high-performance solutions that solve real operational challenges. Our commitment to quality drives every project, supported by a trusted network for maintenance, technical assistance, and ongoing after-sales service.

Elevate Your Power



TUBOSHU⁷

© 2025 Tuboshu. All Rights Reserved

tuboshu.co.uk

Certain specification(s) are based on engineering calculations and are not actual measurements. Specification(s) are provided for comparison purposes only and are subject to change without notice. Specification(s) for your individual Tuboshu equipment will vary based on normal variations in design, manufacturing, operating conditions, and other factors. Pictures of Develon units may show other than standard equipment.



TUBOSHU⁷

FORKLIFT⁷ TF120D

TECHNICAL SPECIFICATION

CHARACTERISTICS

Manufacturer	TUBOSHU
Model	TF120D
Configuration Number	TUHECPCD120UK
Rated Capacity (Q)	12000 kg
Load Center (c)	600 mm

DIMENSIONS

Lifting Speed (loaded)	mm/s	350
Lowering Speed (loaded)	mm/s	370
Travelling Speed (Loaded/Unloaded)	km/h	27/29
Max. Gradeability	%	20

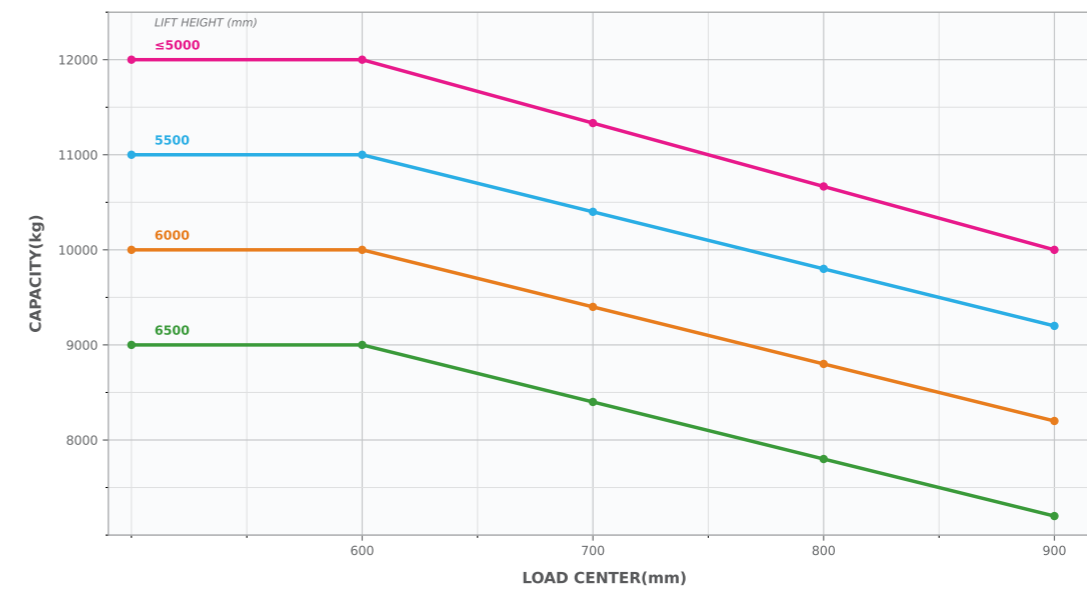
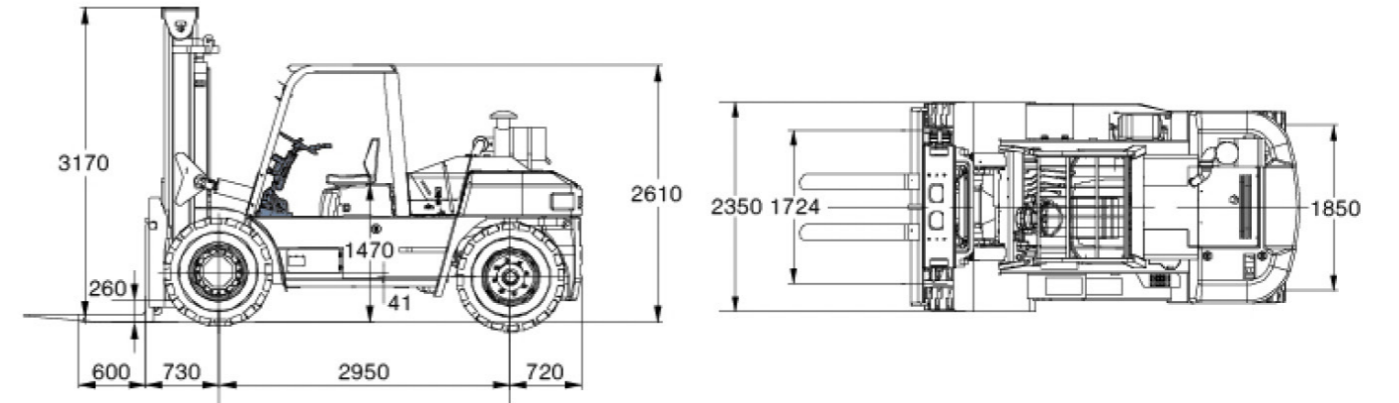
PERFORMANCE PARAMETERS

Lifting Height (standard)	α/β	mm	3000
Mast Tilt (fwd/bwd)	h1	°	6/12
Min. Turning Radius	h2	mm	4300
Overall Length (with forks)	h3	mm	4400(5770)
Overall Width	h4	mm	2350
Mast without Activity	h6	mm	3170
Wheel Base	h7	mm	2950
Tread (fwd/bwd)	h10	mm	1724/1850
Overhang (fwd/bwd)	m1	mm	730/720
Min. Under Clearance	L1	mm	260
Lateral Fork Adjustment (outside of forks)	L2	mm	420-2200
Fork Length	x	mm	1370
Fork Width/Thickness	y	mm	175/85

ENGINE

Engine Manufacturer /Model		Cummins CA6DF3-12GAG3U-HL10
Cylinder Number/Displacement	/L	6/7.127
Rated Power / Roted Speed	kw/rpm	118/2200
Max Torque/ Roted Speed	kw/rpm	640/1300-1700
Gearbox		Special Gearbox for Tuboshu

TECHNICAL SPECIFICATION



Note: The vertical axis stands for load capacity and the horizontal axis stands for load center which is calculated from the front surface of the forks to the gravity of the standard load. The standard load means a cubic with 1200mm edge length. When mast is tilted forward, using non-standard forks or loading large goods, the load capacity will be reduced. The load capacity of standard mast at different load center can be known from this load chart.