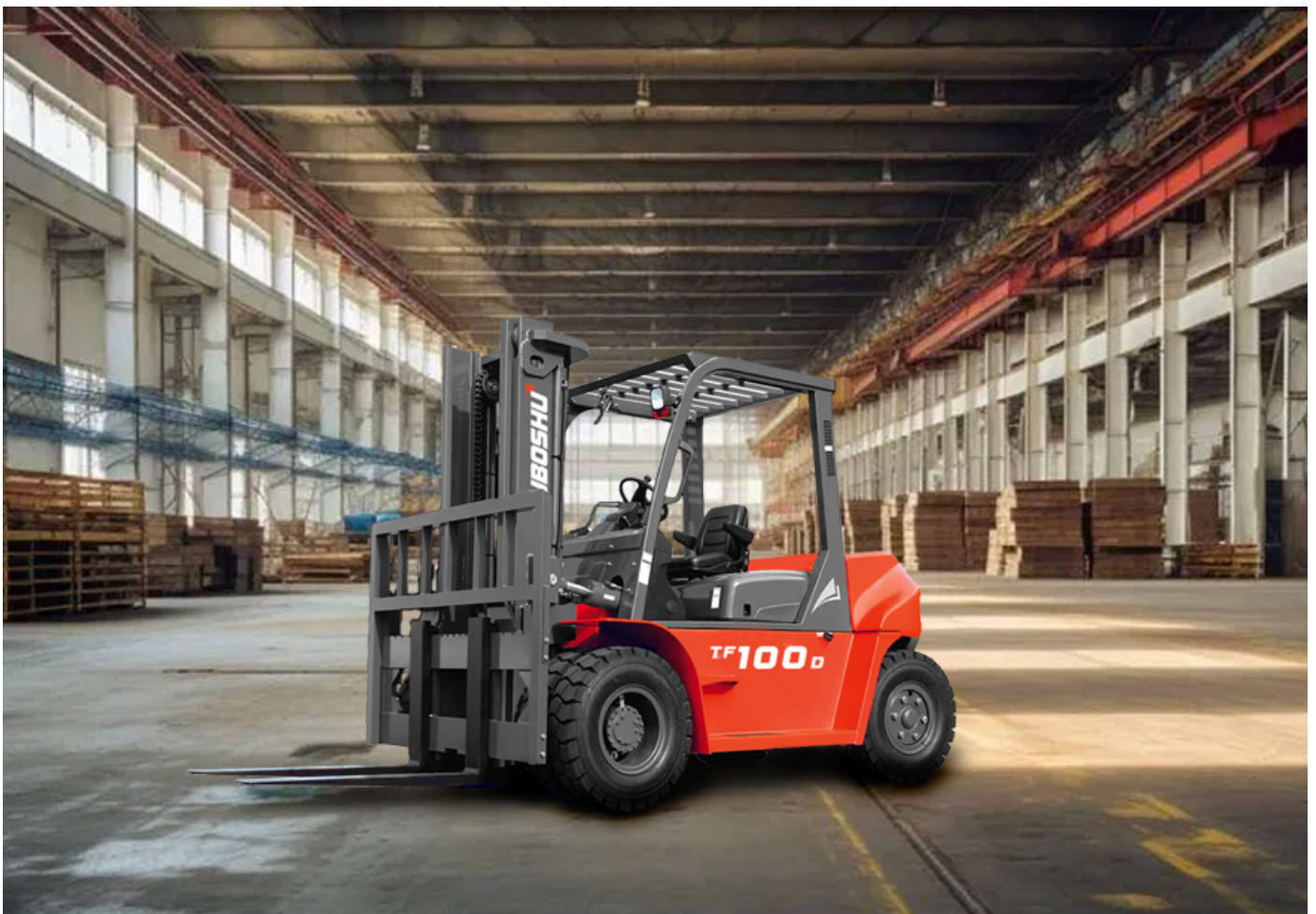


FORKLIFT TF100D-H DIESEL

A powerful diesel machine that can lift up to 10 tons of weight, making it suitable for a variety of heavy-duty applications



TUBOSHU

SUITE 5, 66 WESTBOURNE TERRACE
LONDON, ENGLAND W2 3UJ
T: +44 7457 405 800

CHARACTERISTICS			
Manufacturer			TUBOSHU
Model			TF100-D
Configuration Number			CPCD 100 W2K2
Power Mode			Diesel
Rated Capacity		kg	10000 kg
Load Center		mm	600 mm
Driving Mode			Seated
Front Overhang	x	mm	700
Wheelbase	y	mm	2850
Total Weight		kg	12300
PERFORMANCE DATA			
Travel Speed (laden/unladen)		km/h	25/29
Lift Speed (laden/unladen)		mm/s	330/530
Lowering Speed (laden/unladen)		mm/s	wihtout load ≥300, with full load ≤600
Max. Drawbar Pull (laden)		kN	60
Max. Gradeability (laden/unladen)		%	20/20
DIMENSIONS			
Mast Tilt Angle (forward/backward)	α/β	°	6/12
Height (mast lowered)	h1	mm	2850
Free Lifting Height	h2	mm	200
Lifting Height (standard)	h3	mm	3000
Max. Height Extended (with backrest)	h4	mm	4415
Height of Overhead Guard	h6	mm	2560
Seat Height Relating to SIP (to ground)	h7	mm	1540
Towing Coupling Height	h10	mm	475
Ground Clearance (between mast)	m1	mm	250
Backrest Height (calculated from the surface of the fork)	h13	mm	-
Overall Length (with fork)	L1	mm	5440
Overall Length (without fork)	L2	mm	4220
Overall Width	b1	mm	2164
Fork Adjustable Range (the external of the fork) (max/min)	b5	mm	470-2100
Fork Size : thickness x width x length	s/e/l	mm	80x175x1220
Tread, Front	b10	mm	1600
Tread, Rear	b11	mm	1700
Right Angle Stacking Aisle Width (1000 x 1200 mm pallet)	Ast	mm	6060
Min. Outside Turning Radius	Wa	mm	3940
WHEEL AND TYRE			
Wheels Number front/rear			4x/2
Tyre Type			Pneumatic / Solid Option
Tyre Size (front)			9.00-20-14PR
Tyre Size (rear)			9.00-20-14PR
OTHER			
Transmission Type			Hydraulic Transmission- Mechanical Shift
Transmission Number of Speed (fwd/bwd)			2/2
Service Brake			Powered Brake-Pedal Type
Parking Brake			Mechanical-Hand Brake Lever Type
Operating Pressure for Attachements		mpa	20.5
Battery Voltage/Capacity		V/Ah	2x12/80

ENGINE MODEL AND MAIN SPECIFICATIONS

ENGINE MODEL	RATED POWER/ ROTATING SPEED (kW/rpm)	RATED POWER/ ROTATING SPEED (nM/rpm)	ENGINE DISPLACEMENT (LITERS)	CYLINDER NUMBER BORE x STROKE	POWER UNIT
ISUZU 6BG1QC-02	82/2000	415/1400-1600	6.5	6-105X125-6.5	Diesel

10T-WIDE VIEWS STANDARD MAST

MAST MODEL	MAX FORK HEIGHT mm	LOAD CAPACITY (LOAD CENTER 600mm) (kg)	FREE LIFT HEIGHT (with backrest) (mm)	HEIGHT (mast lowered) (mm)	SERVICE WEIGHT (KG)	MAST TILT ANGLE α/β (°)
		10T	10T	10T		
M250	2500	10000	200	2600	12379	6/12
M270	2700	10000	200	2700	12419	6/12
M300	3000	10000	200	2850	12500	6/12
M330	3300	10000	200	3000	12548	6/12
M350	3500	10000	200	3100	12593	6/12
M375	3750	10000	200	3225	12643	6/12
M400	4000	10000	200	3400	12783	6/12
M425	4250	10000	200	3525	12838	6/12
M450	4500	10000	200	3650	12888	6/12
M475	4750	9500	200	3775	12945	6/6
M500	5000	9000	200	3900	13000	6/6
M550	5500	8500	200	4200	13301	6/6
M600	6000	7800	200	4450	13351	6/6

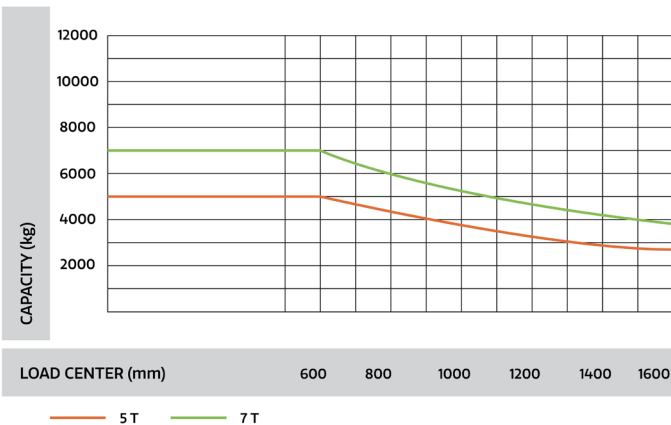
10T-FULL FREE 2-STAGE MAST

MAST MODEL	MAX FORK HEIGHT mm	LOAD CAPACITY (LOAD CENTER 600mm) (kg)	FREE LIFT HEIGHT (with backrest) (mm)	HEIGHT (mast lowered) (mm)	SERVICE WEIGHT (KG)	MAST TILT ANGLE α/β (°)
		10T	10T	10T		
ZM250	2500	10000	1215	2600	12379	6/12
ZM270	2700	10000	1315	2700	12419	6/12
ZM300	3000	10000	1465	2850	12500	6/12
ZM330	3300	10000	1615	2975	12548	6/12
ZM350	3500	10000	1715	3100	12593	6/12
ZM375	3750	10000	1840	3225	12643	6/12
ZM400	4000	10000	2015	3400	12783	6/12
ZM425	4250	10000	2140	3525	12838	6/12
ZM450	4500	10000	2265	3650	12888	6/12
ZM475	4750	10000	2390	3775	12945	6/6
ZM500	5000	10000	2515	3900	13000	6/6
ZM550	5500	9000	2815	4200	13301	6/6
ZM600	6000	8000	3065	4450	13351	6/6

10T-FULL FREE 3-STAGE MAST

MAST MODEL	MAX FORK HEIGHT mm	LOAD CAPACITY (LOAD CENTER 600mm) (kg)	FREE LIFT HEIGHT (with backrest) (mm)	HEIGHT (mast lowered) (mm)	SERVICE WEIGHT (KG)	MAST TILT ANGLE α/β (°)
		10T	10T	10T		
ZSM360	3600	8500	1150	2570	13236	6/12
ZSM400	4000	8500	1280	2700	13328	6/12
ZSM435	4350	8500	1400	2820	13408	6/12
ZSM450	4500	8200	1450	2870	13448	6/6
ZSM480	4800	8000	1550	2970	13516	6/6
ZSM500	5000	7700	1615	3035	13562	6/6
ZSM540	5400	7000	1805	3225	13696	6/6
ZSM600	6000	6300	2005	3425	13836	6/6
ZSM650	6500	5600	2170	3590	13954	6/6
ZSM700	7000	4600	2435	3855	14132	6/6

LOAD CURVE



Note : The vertical axis stands for load capacity and the horizontal axis stands for load center which is calculated from the front of the fork. The base point of the standard load refers to the center position of the cube with 1000mm length of side. When mast is tilted forward, non standard fork usage or load with over wide goods, load capacity will be reduced. Different load capacity in different load center can be known in time through load chart

