

Engineering built smarter. Solutions built to last.

Tuboshu delivers innovative, sustainable engineering built for Africa. Backed by decades of expertise, we design adaptive, high-performance solutions that solve real operational challenges. Our commitment to quality drives every project, supported by a trusted network for maintenance, technical assistance, and ongoing after-sales service.

Elevate Your Power



TUBOSHU⁷

© 2025 Tuboshu. All Rights Reserved

tuboshu.co.uk

Certain specification(s) are based on engineering calculations and are not actual measurements. Specification(s) are provided for comparison purposes only and are subject to change without notice. Specification(s) for your individual Tuboshu equipment will vary based on normal variations in design, manufacturing, operating conditions, and other factors. Pictures of Develon units may show other than standard equipment.



TUBOSHU⁷

EXCAVATOR⁷ TX 1000

TECHNICAL SPECIFICATION

CHARACTERISTICS

Manufacturer	TUBOSHU
Model	TX1000
Configuration Number	TUTZ1000UK

GENERAL INFO

Operating Weight	97000 kg
Rated Power	574Kw / 1800rpm
Standard Bucket Capacity	6.5 m ³
Rock Bucket Capacity	6.5 m ³

ENGINE

Brand	Scania
Model	DC16 088A
Emission Standard	Tier III
Rated Power	574Kw / 1800rpm
Displacement	16.4 L

HYDRAULIC SYSTEM

Brand	Rexroth
Max. Oil Flow	488 x 2 + 435 L/min
Implement Circuit	34.3 MPa
Travel Circuit	34.3 MPa
Swing Circuit	38 MPa
Pilot Circuit	3.9 MPa

SERVICE REFILL CAPACITIES

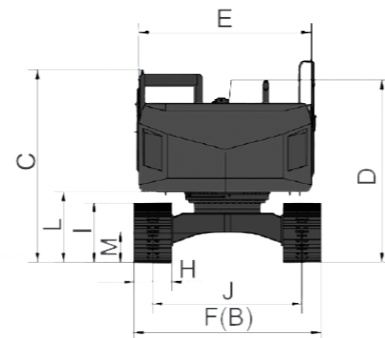
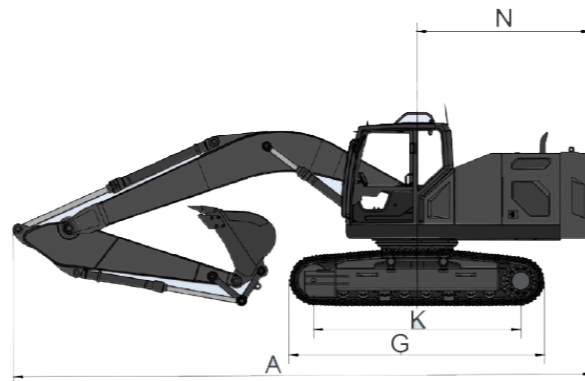
Fuel Tank	1200 L
Hydraulic Oil Tank	500 L
Engine Oil	55 L

PERFORMANCE

Bucket Digging Force	487 kN
Arm Digging Force	462 kN
Swing Speed	6.5 r/min
Max. Travel Speed	3.2/2.2 km/h
Max/ Travel Force	660 kN
Gradeability	35 degrees
Ground Pressure	128 kPa
Bucket Capacity	6.5 m ³

DIMENSIONS (mm)

Transport Length	A	13962
Transport Width	B	4510
Height Over Cabin	C	3812
Height Over Boom (Transport)	D	5200
Upperstructure Carriage Width	E	3480
Undercarriage Width	F	4160/3400
Track Length	G	6427
Track Width	H	650
Track Height	I	1522
Track Gauge	J	3510/2750
Central Distance of Tumblers	K	5180
Counterweight Clearance	L	1658
Min. Clearance	M	939
Tail Swing Radius	N	4738
Boom Length	O	7250
Arm Length	P	2925



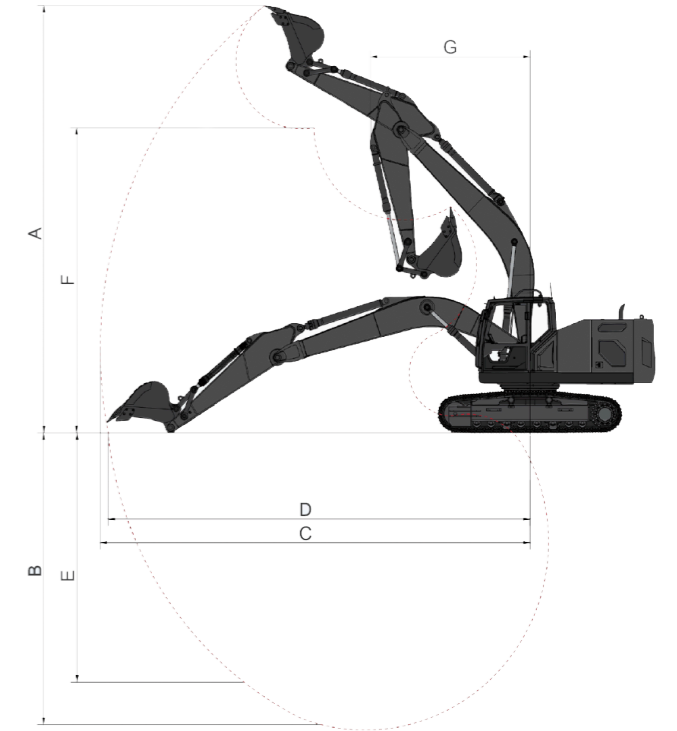
TECHNICAL SPECIFICATION

WORKING RANGE (mm)

Max. Digging Height	A	12115
Max. Digging Depth	B	6921
Max. Digging Radius	C	12426
Max. Digging Reach	D	12073
Max. Vertical Digging Depth	E	4070
Max. Dumping Height	F	8100
Min. Swing Radius	G	5871

OPTIONAL ITEMS

Breaking Hammer Line
Front Guard of Cab
800 mm Track Width



LIFTING CAPACITY

Lifting Point Height (m)	Over Front					Over Side				
	Lifting Point Radius (m)					Lifting Point Radius (m)				
	3	4.5	6	7.5	9	3	4.5	6	7.5	9
7.5				17404					14862	
6			20920	18236	16886			20920	14390	10495
4.5			23700	19583	17309			19470	13699	10229
3			26262	20951	17911			18103	12990	9876
1.5			27708	21890	18293			17188	12427	9572
Ground			27767	22056	18061			16762	12096	9405
-1.5		33501	26468	21128			27418	16711	12096	
-3	35164	29301	23517	18291		35164	27946	16992	12293	
-4.5		22285	17384				22285	17384		

