

CONTAINER TRUCK TC100D-H

The Tuboshu TC100D Container Truck combines a heavy-duty 10-ton loading capacity with an impressive lifting height of up to 19,000 mm, powered by diesel energy. Designed for efficient container handling and transport, it enhances productivity in demanding environments.



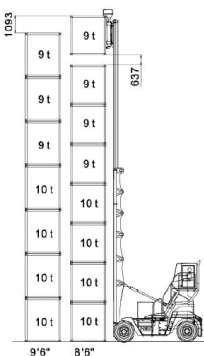
TUBOSHU

SUITE 5, 66 WESTBOURNE TERRACE
LONDON, ENGLAND W2 3UJ
T: +44 7457 405 800

CHARACTERISTICS

Manufacturer			TUBOSHU
Model			TC100-D
Configuration Number			CPCD250EC8
Rated Capacity	Q	kg	see load diagram
Load Center	C		1200
Max. Handling Layers			8 (8'6")
Length of Container Lifted		ft	20/40
Max. Rotary Lock Height	H2	mm	21365
Min. Rotary Lock Height	H8	mm	2255/2300
Mast Tilt Angle (front/rear)		°	3/3
Lateral Displacement of Spreader		mm	±500/±600
Stall Speed		km/h	24/22
Max. Lifting Speed (loaded/unloaded)		mm/s	520/600
Max. Descending Speed (loaded/unloaded)		mm/s	300≤Measured Value≤600
Gradeability (loaded)		%	28
Wheelbase	L3	mm	4250
Tread (front/rear)	S1/S2	mm	3290/2395
Length (with attachment)	L	mm	6440
Width	B	mm	6065
Height (mast retraction)	H3	mm	11620
Engine	Manufacturer/Model		Volvo TAD851VE
	Rated Output/Speed	kW/rpm	185/2200
	Max. Torque Speed	Nm/rpm	1160/1350
Gear Box Torque Converter	Manufacturer/Model		ZF/3WG211
	Shift Gears (fwd/bwd)		3/3
	Shift Type		Automatic
Tire	Front Wheel Size		14.00-24-28PR
	Rear Wheel Size		14.00-24-28PR
	Air Pressure (front/rear)	kPa	880/880

>Loading Diagram



>Loading Diagram

