

# Tonly TLD125 Promotion



同力重工

TONLY



- I Product introduction
- II Product adaptability introduction
- III Product technical advantage
- IV Application case

# I Product introduction

Large load, impact resistance, long life, high reliability, low use cost, more efficient braking



- 1. Rated Payload: 91t.
- 2. Impact resistance: The key parts of the frame are castings, oil-gas suspension and V-shaped cargo box, can meet 10 cubic meter electric shovel loading.
- 3. Long life: vehicle design life of more than 8 years.
- 4. High reliability: The average attendance of the vehicle during the 7000h product life-cycle, The rate is greater than 90%.
- 5. Low use cost: the whole vehicle uses all Chinese-made parts, spare parts and maintenance costs low, the average monthly cost lower than \$770/month (including maintenance and spare parts storage Ready); Fuel consumption is about 2L/km (average).
- 6. Disc brake: the brake is more efficient, and the braking capacity is improved than the drum brake 24%, easier to maintain.

# I Product introduction

Product reliability is better than Off-road Dump Truck. (P2,3,4)  
Cost-effective is better than traditional mining trucks. (P5,6)



Tonly TLD125



XCMG XDR90TA



SANY SRT130S



LGMG RT136



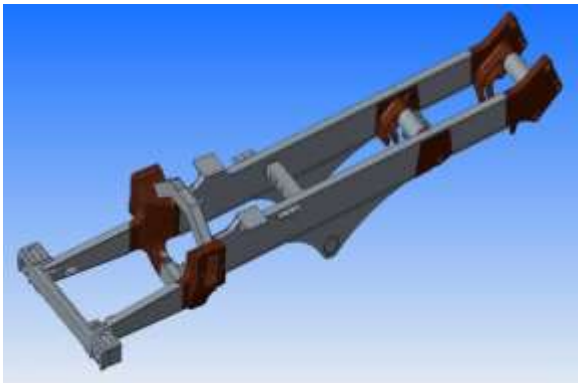
TEREX TR100



Classic Mining Trucks

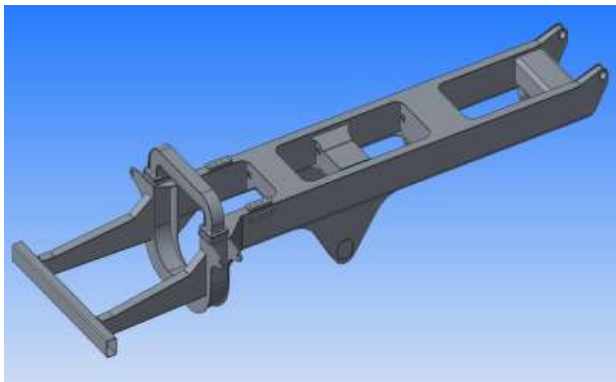
# I Product introduction

The three basic features of mining dump trucks:  
**large load bearing / impact resistance / long life**



Rigid frame with casting structure in key parts (Classic Mining Truck, TLD125)

Designed to last more than 8 years for 10 cubic meters electric shovel loading



Welded frame, all steel plate welded structure (XCMG XDR90TA; LGMG RT136; SANY SRT130S)

Design life of 3-5 years, can meet up to 7 cubic meters of excavator loading



Flexible frame, bolt-on structure (Tonly, LGMG, Sany, SINO and other wide-body vehicles)

Design life of 3-5 years, can meet up to 7 cubic meters of excavator loading

# I Product introduction (Lower maintenance)

**Dual axle drive** off-highway mining trucks, through the addition of a drive axle technical solutions, to achieve the vehicle large tonnage load, while improving the vehicle cost-effective.



TLD125 (double axle drive mining truck - Tonly solution)



CAT777 (single axle drive mining truck - Classic mining truck)

TLD125 mining truck economic advantages: compared with CAT777 and other load 90t class classic mining trucks, TLD125 acquisition cost is reduced to \$2,800/ton; fuel consumption is reduced by more than 20%; tire cost savings of about \$22,200/year ▪ unit.

# I Product introduction (Low acquisition costs)

Tonly: less than \$2,800/ton



Sany: more than \$6,900/ton



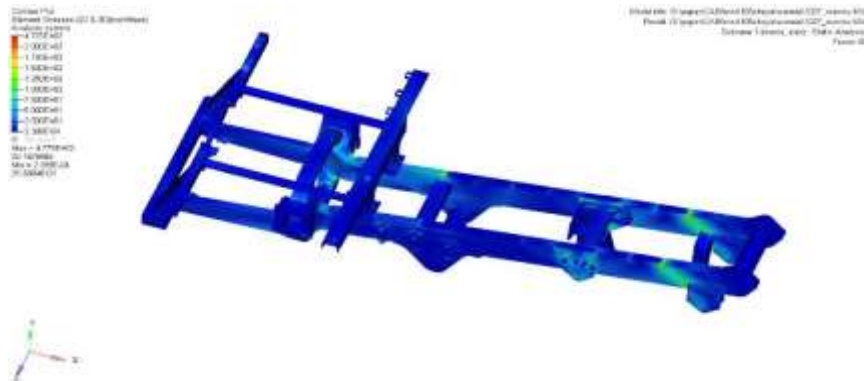
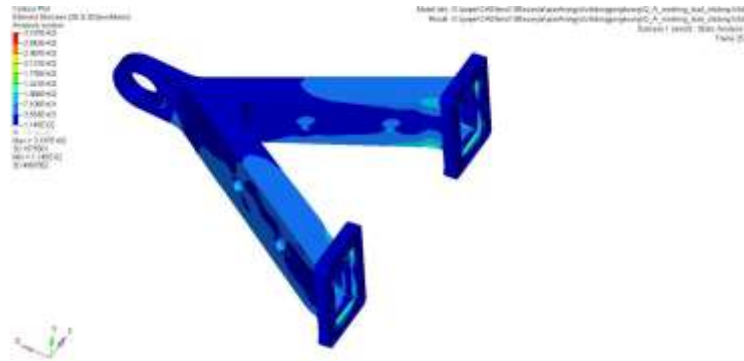
Terex: less than \$8,400/ton





# I Product introduction

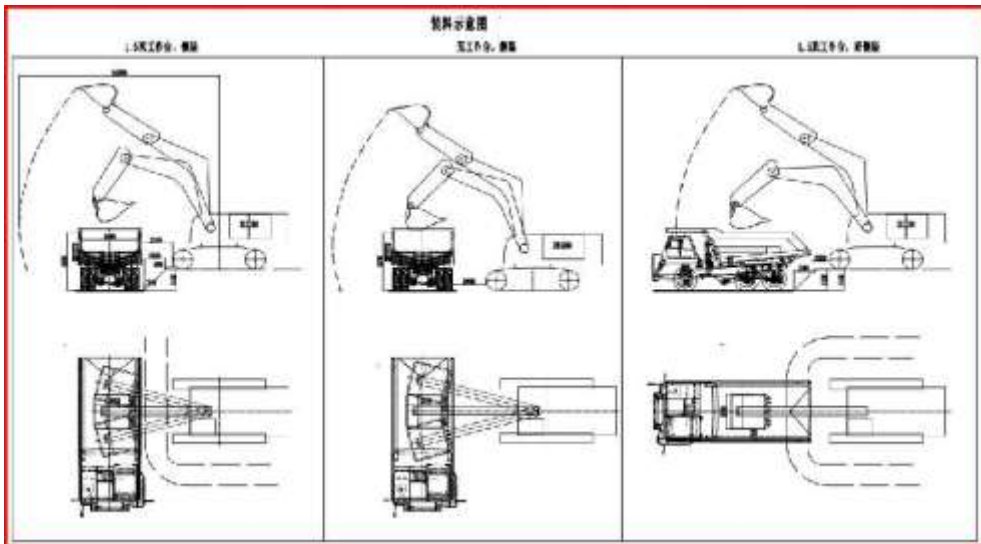
Large load, impact resistance, long life



Based on real-life test data, the main structural components are optimized for strength and reliability, with a design life of more than 8 years.

## II Product adaptability

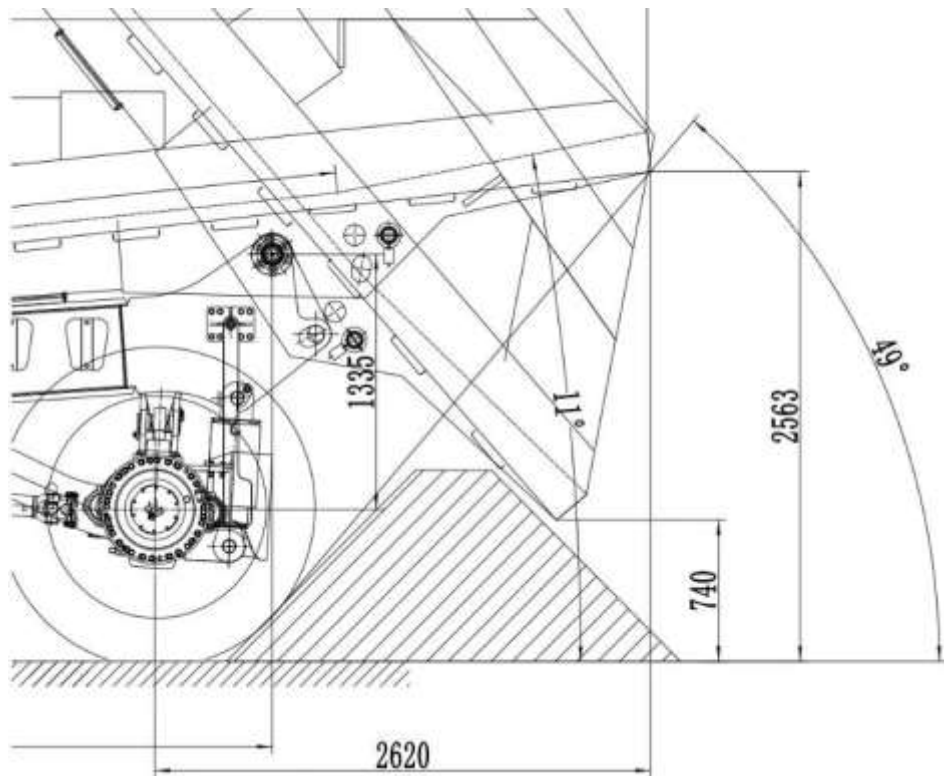
### Smoother loading



Can meet the 1250 excavator and above loading equipment from the side and rear of the vehicle loading; The vehicle chassis can withstand a single bucket of 20T mass impact.

## II Product adaptability

More thorough, safer and more efficient discharge



The "tail tilt + long rear suspension" structure of the cargo box can cross the 1000mm high retaining wall, and the discharge is more thorough, without arranging the loader to push the material; The bulk material is not stuck in the discharge, and the discharge is safer.

## II Product adaptability

Quickly balance the impact, improve vehicle reliability, extend product life

2.1 The dual-axle drive vehicle adopts the oil-gas suspension structure with **unilateral connection**.



The realization of the single side connected oil-gas suspension structure can not only **balance the axle load quickly**, but also protect the chassis parts. It can also reduce the **cylinder specifications** and reduce the cylinder procurement cost.

## II Product adaptability

Quickly balance the impact, improve vehicle reliability, extend product life

2.2 Impact resistance (adapt to a wider range of excavators and greatly expand product application scenarios)



HITACHI

Reliable solutions



SANY

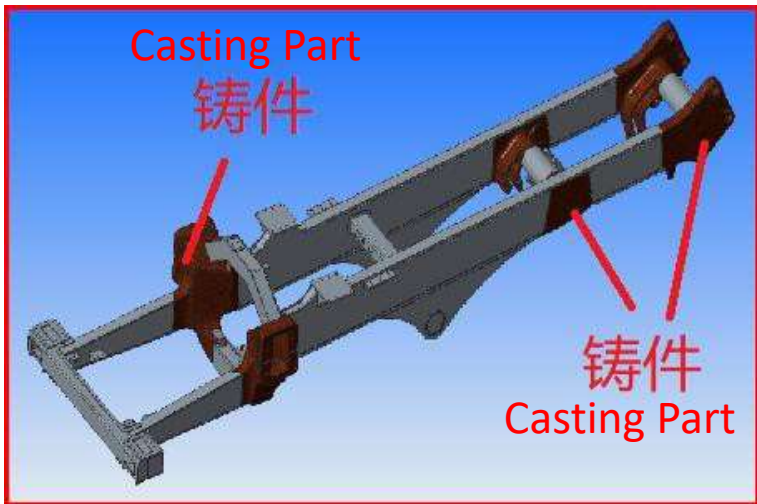
KOMATSU

小松

The vehicle can be matched with 7 ~ 12m<sup>3</sup> excavator or shovel loading, 4 ~ 6 buckets filled with a car, in line with the best loading efficiency conditions ; The vehicle can carry a load impact mass of 20T/ bucket (the same impact resistance level as a traditional 100T class mine vehicle).

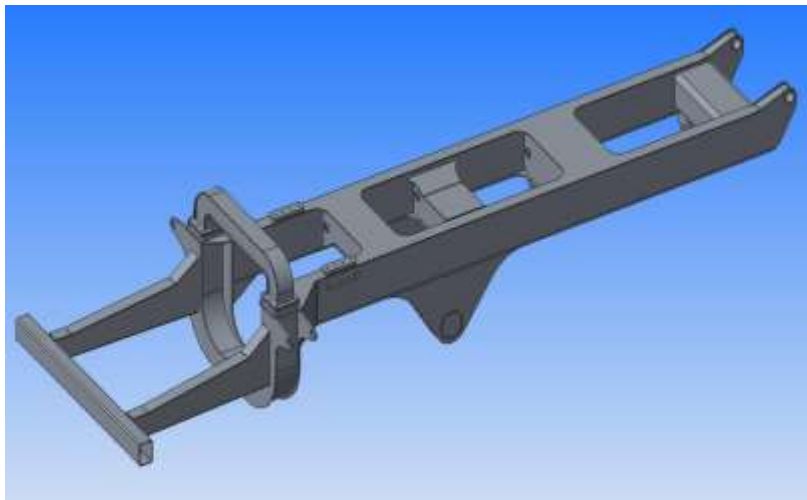
### III Product adaptability

Product technical advantages - rigid frame, can meet 10 cubic shovel loading, service life of 8 years



TLD125 frame structure

(rigid frame = castings + plate welds)



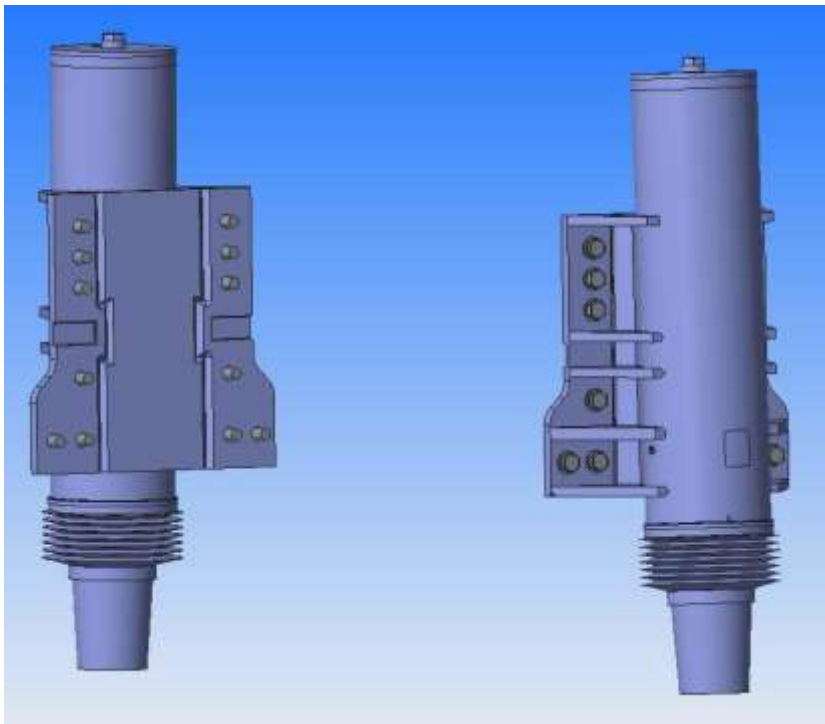
Competing frame structure

(welded frame = plate welds)

The frame adopts casting welding structure, and the key stress parts are purchased casting structure, which can meet the requirements of 10 cubic electric shovel loading. The frame overload capacity is strong, the loading impact resistance is good, the reliability is high, and the life of the frame can reach more than 8 years.

## III Product adaptability

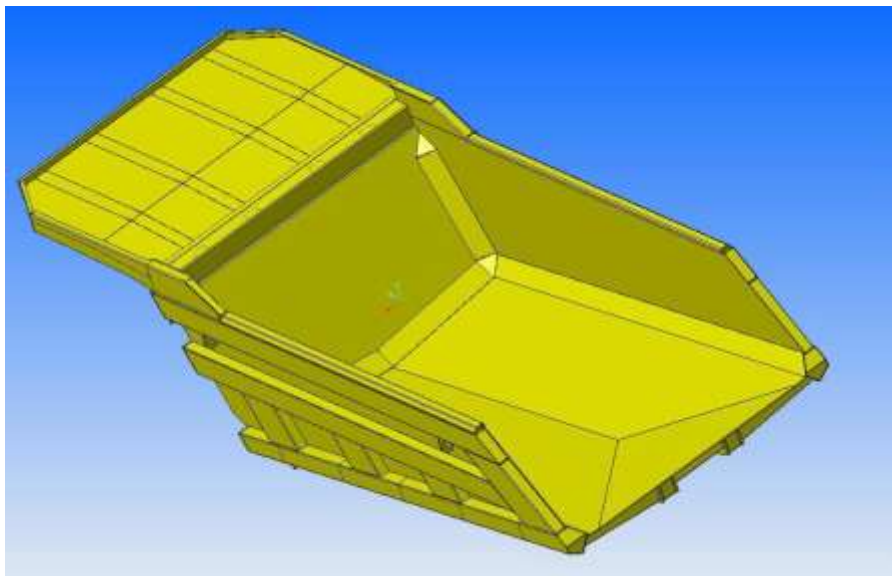
Hydro-pneumatic suspension before independence, good road adaptability s



Independent oil-gas front suspension adopts mature structure of mining vehicle, good shock absorption performance, high reliability, can ensure better driving comfort at higher cycle speed, and can have a wider road adaptation range than the whole front axle suspension.

### III Product adaptability

V-shaped cargo box structure, smooth loading, safe and thorough unloading, can adapt to 12 cubic shovel loading



V-shaped cargo box, can meet 12 cubic electric shovel loading, loading more smoothly, discharge more thoroughly; It can meet the discharge of 1000mm high retaining wall, without the loader to push the material; Pulling large stones is not stuck, and unloading is safer; The brim of the cargo box covers the cab completely, effectively protecting the safety of the passengers.



### III Product adaptability

Disc brake, large braking torque, good heat dissipation effect, automatic adjustment of brake gap, friction plate replacement more convenient



TLD125 disc brakes



Competing drum brakes

## IV Application case



TLD125 products have been verified in multiple working conditions in Henan, Xinjiang, Inner Mongolia, Tibet, Shaanxi and other places. The applications include plateau, cold, long haul, comprehensive road conditions, large equipment (12 cubic electric shovel), soft road surface, etc. The product performance is stable, the operating cost is low, and the attendance is guaranteed.

TLD125 will be the industry's first large-scale, long-life product based on domestic resources, with a load of 90t class and full working conditions, which can match 10 cubic excavator/shovel.

## IV Application case



Since a TLD125 test vehicle of Tonly Heavy Industry was put into use in Yulong Copper Mine in Tibet on December 20, 2022, it has run 6400h and 72000km by December 20, 2023, with an average daily operation of more than 20h and an average attendance rate of more than 90%.

According to statistics, the average transport distance is 4km, the comprehensive road condition, the fuel consumption is 2L/km, and the average monthly consumption (including daily maintenance, vulnerable and consumable parts, spare parts) cost is about 5500 yuan/month (including spare parts reserve).

# IV Application case

轨迹	功率	图表	数据
最快速度			32.96 km/h
Max speed			
海拔			
累计上升			68 m
Cumulative altitude rise			
累计下降			68 m
Cumulative loss of altitude			
海拔范围			4734.2 ~ 4815.7 m
Elevation range			
坡度范围			-14% ~ 13%
Slope range			
时间			
运动时间	Run time		14:56
全程时间	Total time		14:56
开始时间	Start time		2023-05-17 08:24
结束时间	End time		2023-05-17 08:39

**速度与海拔**




1. Batch market, group operation, stable performance, monthly attendance time more than 600h
2. 90t load, high cycle efficiency, guaranteed braking
3. Wide-body dustpan container, smooth loading, complete unloading, no need to push the loader
4. 12 cubic excavator and 10 cubic hydraulic shovel loading, higher efficiency
5. Rigid chassis, simple structure, easy maintenance.