

## YAMAMOTO Drifter

Optional Reverse Percussion feature allows for the simple and efficient removal of a stuck or hung drill string

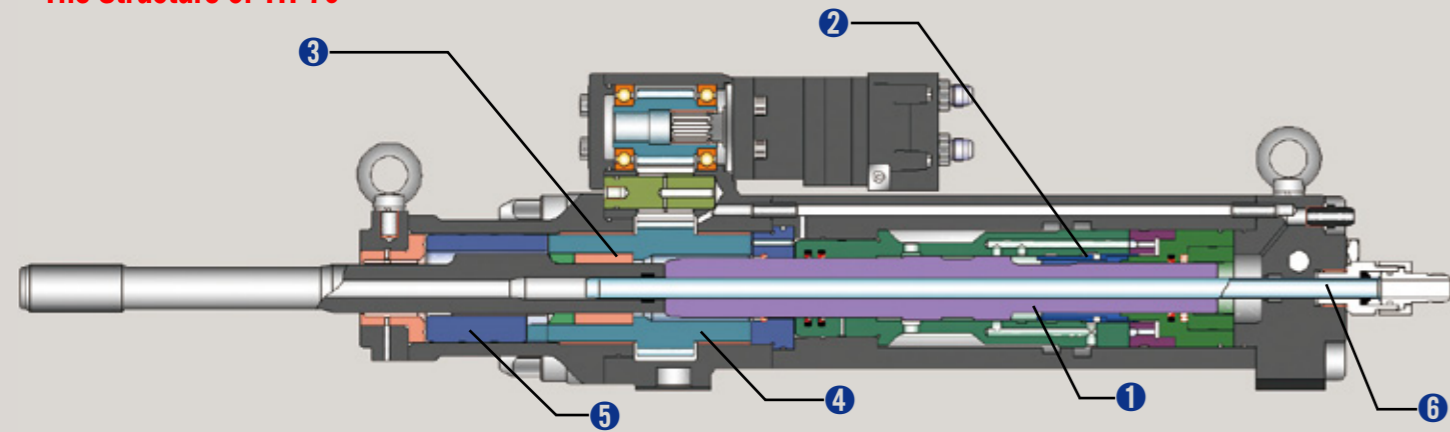


DRIFTER	Model			
	YH-70	YH-80	YH-135	YH-225
Model	-	YH-70	YH-80	YH-135
Impact power	hp (kw)	20(15)	22(17)	28(21)
Rotation	rpm	max. 200	max. 150	max. 120
Rod Thread	mm	T38 / T45	T45 / T51	T51
Number of Blows	bpm	2,800-3,000	2,400-3100	2,300-2,500

Model	JD-800	JD-800E	JD-1300E	JD-1400E	JD-1500E
<b>YH-70</b>	•	•			
Hole Range	Ø65mm ~ Ø102mm				
<b>YH-80</b>			•		
Hole Range	Ø65mm ~ Ø115mm				
<b>YH-135</b>				•	
Hole Range	Ø102mm ~ Ø127mm				
<b>YH-225</b>					•
Hole Range	Ø102mm ~ Ø127mm				

### • The Structure of YH-70



- 1. Piston**  
Direct piston blow enhances the energy efficiency.
- 2. Valve**  
Through reciprocating motion of piston, this direct operated valve controls the flow of oil to maintain piston reciprocation.
- 3. Chuck Bushing**  
It absorbs a shock on percussion bounce and extend the wear life of parts of drifter.
- 4. Chuck Driver**  
Rotation energy is transmitted to chuck from rotation motor.
- 5. Chuck**  
It delivers rotation force to shank adaptor, rod and bit.
- 6. Blow Tube**  
Highly compressed air passes through blow tube to clear chips from the hole.



• **Head Office & Factory**  
#365, Woram-ro, Eumbong-myeon, Asan-si, Chungcheongnam-do, Korea  
Tel. 82-41-539-0200 / Fax. 82-41-547-0020

• **Overseas Sales Team**  
Tel. 82-41-539-0338 / Fax. 82-41-539-0389  
hagenehee@soosan.co.kr

• <http://www.soosancsm.co.kr>





Drilling Diameter 65 ~ 102 mm (2.5" ~ 4")  
 Drifter 22hp / 17kw  
 Air Flushing 5.5 m<sup>3</sup> / min, 6.6m<sup>3</sup> / min  
 Drill Steel T38, T45

# JD-800 / JD-800ENC / JD-800E (II)

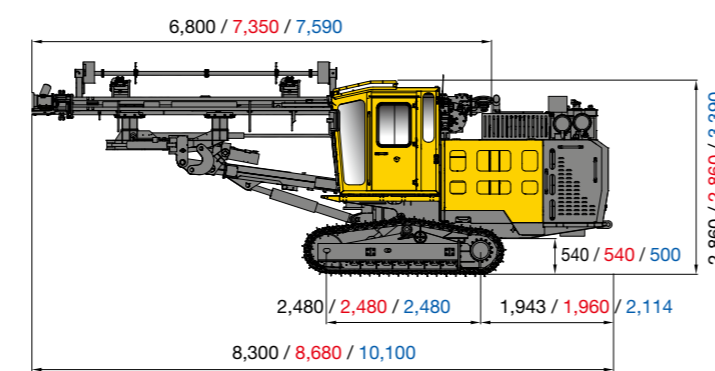


Drilling Diameter 64 ~ 115 mm (2.5" ~ 4.5")  
 Drifter 27hp / 20kw  
 Air Flushing 8 m<sup>3</sup> / min  
 Drill Steel T38, T45, T51

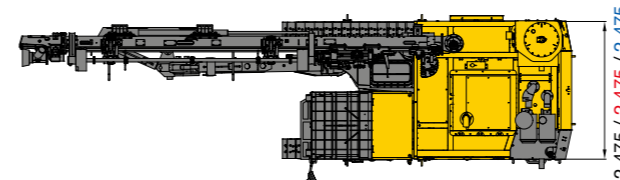
# JD-1300E

## SOOSANCSM Hydraulic Rock Drill

### JD-800 / JD-800E / JD-800EII

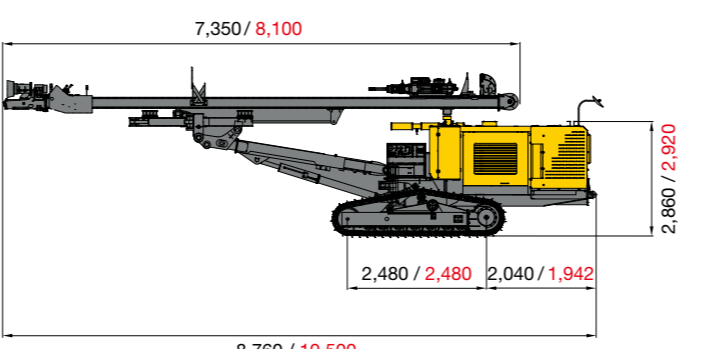


JD-800 / JD-800E / JD-800EII

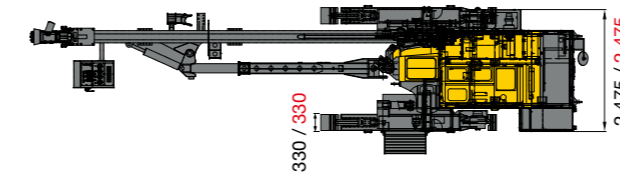


• Gross Weight : 10,850 / 12,000 / 14,800 kg

### JD-800ENC / JD-800ENCL

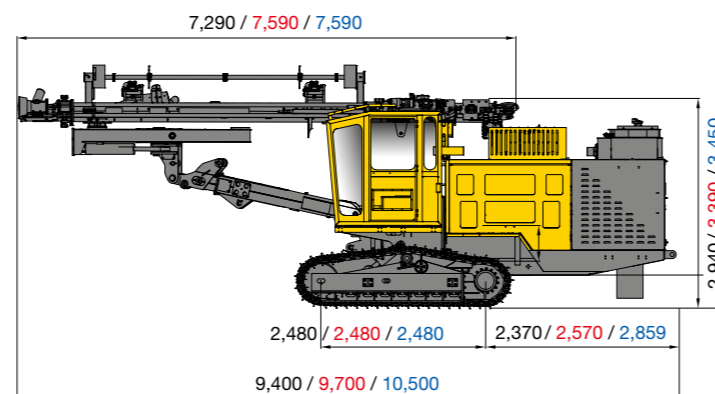


JD-800ENC / JD-800ENCL

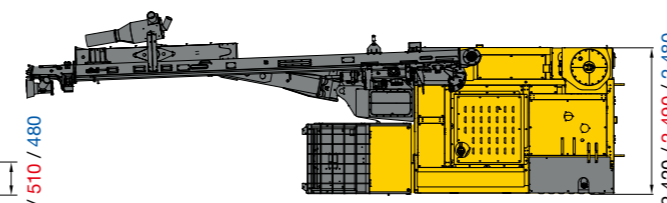


• GrossWeight : 11,700 / 12,800 kg

### JD-1300E / JD-1400E / JD-1400EII

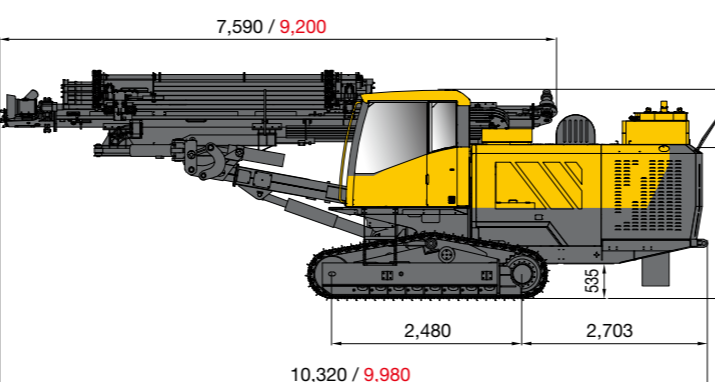


JD-1300E / JD-1400E / JD-1400EII

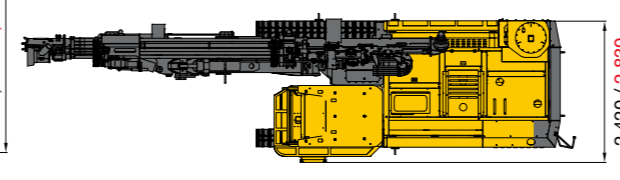


• GrossWeight : 14,700 / 16,000 / 17,000 kg

### JD-1500E / JD-1500L



JD-1500E / JD-1500L



• GrossWeight : 17,400 / 17,600 kg

## Specifications

GENERAL SPECIFICATION		JD-800	JD-800E (II)	JD-800ENC / L	JD-1300E	JD-1400E (II)	JD-1500E / L
Gross Weight	kg	10,850	12,000 (14,800)	11,700 / 12,800	14,700	16,000 (17,000)	17,400 / 17,600
Overall Length	mm	8,300	8,680 (10,100)	8,760 / 10,500	9,400	9,700 (10,500)	10,320 / 9,980
Overall Width	mm	2,475	2,475	2,475	2,420	2,490 (2,480)	2,420 / 2,830
Overall Height	mm	2,860	2,860 (3,390)	2,860 / 2,920	2,940	3,390 (3,450)	3,360 / 3,800

PERFORMANCE		JD-800	JD-800E (II)	JD-800ENC / L	JD-1300E	JD-1400E (II)	JD-1500E / L
Hole Range	mm	Ø65 ~ Ø102	Ø65 ~ Ø102	Ø65 ~ Ø102	Ø64 ~ Ø115	Ø102 ~ Ø127 (Ø89 ~ Ø127)	Ø102 ~ Ø127
Drilling Depth	m	15	18	18 / 20	25	25 (28)	25 / 28
Gradeability	°	30	30	30	28	28 (30)	30
Traveling Speed	km/hr	0 ~ 3.8	0 ~ 3.8 (3.3)	0 ~ 3.8	0 ~ 3.5	0 ~ 3.3	0 ~ 3.6

DIESEL ENGINE		JD-800	JD-800E (II)	JD-800ENC / L	JD-1300E	JD-1400E (II)	JD-1500E / L
Model (CUMMINS)	-	B5.9-C	B5.9C-TIER1 (QSB6.7-TIER4)	B5.9C-TIER1 B6.7-TIER4, STAGEV	6CTAA8.3C - 215	6CTAA8.3 - C260 (QSL9 - TIER4)	QSL9
Rated Output (SAE J1995)	hp/rpm	156 / 2,200-TIER1	156 / 2,200 - TIER1 (173 / 2,200 - TIER4)	158 / 2,200 - TIER1 173/2,500-TIER4,STAGEV	215 / 2,200	260 / 2,200 (320 / 2,200 - TIER4)	325 / 1,950

AIR COMPRESSOR		JD-800	JD-800E (II)	JD-800ENC / L	JD-1300E	JD-1400E (II)	JD-1500E / L
Working Pressure	kg / cm <sup>2</sup>	10.5	10.5	10.5	10.5	10.5	10.5
Free Air Delivery	m <sup>3</sup> / min	5.5	5.5 (6.6)	5.5 / 6.6	8	11.3 (13.9)	14
Tank Capacity	m <sup>3</sup>	0.051	0.051	0.051	0.051	0.075	0.1

DUST COLLECTOR		JD-800	JD-800E (II)	JD-800ENC / L	JD-1300E	JD-1400E (II)	JD-1500E / L
Air Pressure	mmAq	550	550	550	550	550	550
Suction Capacity	m <sup>3</sup> / min	24	24	24	24	40	40
Number of Filters	ea	4	4	4	4	6	6

BIT & ROD		JD-800	JD-800E (II)	JD-800ENC / L	JD-1300E	JD-1400E (II)	JD-1500E / L
Rod Length	mm	3,050 , 3,660	3,660 , 3,050	3,660 / 6,100	3,660	3,660	3,660 / 6,100
Bit Dia	mm	Ø65 ~ Ø102	Ø65 ~ Ø102	Ø65 ~ Ø102	Ø64 ~ Ø115	Ø102 ~ Ø127 (Ø89 ~ Ø127)	Ø102 ~ Ø127
Thread	-	T38 , T45	T38 , T45 (T51)	T38 , T45	T51 (T38,T45)	T45 , T51	T51

HYD. PUMP		Variable Piston Pump + Gear Pump					
-----------	--	----------------------------------	--	--	--	--	--

GUIDE SHELL		JD-800	JD-800E (II)	JD-800ENC / L	JD-1300E	JD-1400E (II)	JD-1500E / L
Overall Length	mm	6,800 , 7,240	7,350 / (7,590)	7,350 / 8,100	7,290	7,590	7,590 / 9,200
Slide Length	mm	1,500	1,500	1,500	1,500	1,500	1,500
Feed Length	mm	3,740 , 4,300	4,300	4,260	4,300	4,300	4,570 / 5,090
Swing Angle	L / R°	65 / 50	65 / 50	40/40 / 40/50	90 / 30	90 / 25 (65 / 50)	9/15 / 65/10
Tilt Angle	°	180	180	180	180	152 (180)	152 / 126

BOOM		JD-800	JD-800E (II)	JD-800ENC / L	JD-1300E	JD-1400E (II)	JD-1500E / L
Overall Length	mm	2,100	2,840	2,100	3,000	3,000	3,000 / 2,870
Lift Angle	Up / Down°	50 / 25	50 / 15	45 / 15	50 / 15	50 / 15	50 / 18
Swing Angle	L / R°	15 / 45	15 / 35 (35 / 25)	40 / 40	25 / 35	35 / 25	17 / 36
Extension Length	mm	-	1,100	1,600 / 1,500	1,100	1,100	900 / -

UNDER CARRIAGE		JD-800	JD-800E (II)	JD-800ENC / L	JD-1300E	JD-1400E (II)	JD-1500E / L
Lenght of Tumbler	mm	2,480	2,480	2,480	2,480	2,480	2,480
Shoe Width	mm	330	330	330	330	330	330
Ground Clearance	mm	540	540 (500)	540	510	510 (480)	535
Oscillation Angle	°	±11	±11 (+8, -10)	±10	±10	±10	±10

ROD CHANGER		JD-800	JD-800E (II)	JD-800ENC / L	JD-1300E	JD-1400E (II)	JD-1500E / L
Number of Roods	ea	4+1	4+1	4+1	5+1 (6+1)	5+1 (6+1)	6+1

• The above specifications can be changed without prior notice.

**Reliable performance & economic production rate with longer life time**  
**SOOSANCSM will be always there for you.**



**Operation Panel**  
 Drilling operation features a pilot hydraulic control system. This simple and efficient system eliminates any potential electrical problems in the drilling circuit.

**Outstanding Gradeability**  
 The optimal combination of a variable piston pump & traveling motor assures excellent mobility in all terrains.



**Rod Changer**  
 - Roller Type  
 - Carousel Type

**Working Temperature : -40°C ~ +50°C**



**Spacious Engine Room**  
 Provides easy access and maintenance.



**Safe Cabin**  
 R.O.P.S./F.O.P.S-certificated cabin provides a safe working environment to operator.



**Wide visibility**  
 Multiple glass windows provide excellent visibility for drilling and operation.



**Movable Dust Hood**  
 Movable Dust Hood allows the operator to see the rod while allowing superb dust control.



**Cyclone**  
 Improves the life of the dust filters and increases the efficiency of the dust-control system by separating the larger pieces of aggregate at the front of the drill.



**Powerful Dust Collector**  
 High efficiency system, features powerful suction and multiple filters to improve drilling performance and allow the operator to easily view the drilling operation.



**Centralized Electric Control Panel**  
 Large Electrical Cabinet allows easy access to the electrical components when maintenance or troubleshooting is required.



**Oscillation**  
 Independent track oscillation provides safe, smooth and efficient mobility in rough terrain.

## Powerful drifter provides outstanding penetration, Straight drilling hole for advanced productivity.

### JET Drifter (New)

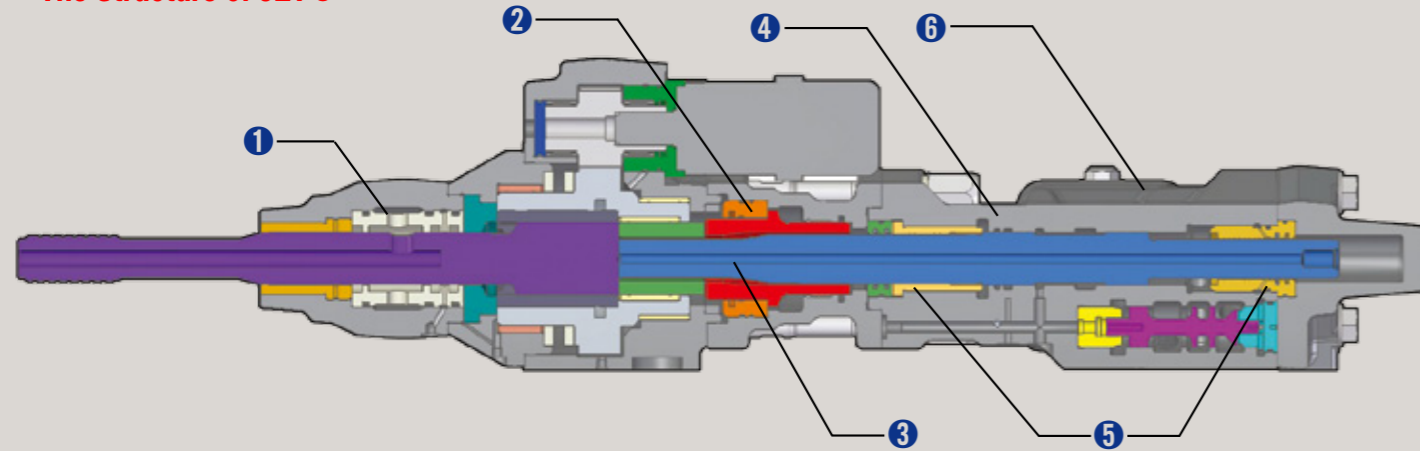
Double (dual) damping system provides high penetration rates of energy in conjunction with maximum drilling economy.



DRIFTER					
Model	-	JET-8 II	JET-9 II	JET-11	JET-15
Impact power	hp (kw)	22(17)	27(20)	28(21)	33(25)
Rotation	rpm	max. 180	max. 190	max. 190	max. 190-125
Rod Thread	mm	T38 / T45	T45 / T51	T45 / T51	T51
Number of Blows	bpm	2,700-3,300	2,200-3,300	2,500-3,000	2,100-3,000
Reverse percussion			Option		

Model	JD-800	JD-800E	JD-1300E	JD-1400E	JD-1500E
JET-8 II	Application Model	•	•		
	Hole Range	Ø65mm	Ø65mm - Ø102mm	Ø102mm	
JET-9 II	Application Model			•	
	Hole Range	Ø64mm	Ø64mm - Ø115mm	Ø115mm	
JET-11	Application Model			•	
	Hole Range		Ø102mm	Ø102mm - Ø127mm	Ø127mm
JET-15	Application Model				•
	Hole Range		Ø102mm	Ø102mm - Ø127mm	Ø127mm

### • The Structure of JET-8



#### 1. Air / Water Combined Flushing Head

Dual seal system in flushing head enables optional water flushing under 14 bar.

#### 2. Hydraulic Damper

It protects the drifter, guide shell and boom absorbing return impact of percussion.

#### 3. Specially Engineered Linear Piston

Piston design allows the maximum transfer of percussion energy into the rock

#### 4. Percussion Adjuster

It balances drifter BPM according to rock hardness.

#### 5. Front/ Rear Bushings and Seal Retainer

The front and rear bushings are designed to minimize the wear of the piston. This innovative design significantly reduces the maintenance expense when rebuilding the hammer.

#### 6. Large Capacity Accumulator

Accumulators optimizes the flow of oil with maximum capacity. This generates a smooth percussion and extends hammer's life.



Drilling Diameter 102 ~ 127 mm (4" ~ 5")  
Drifter 30hp / 23kw  
Air Flushing 11.3 m<sup>3</sup> / min, 13.9 m<sup>3</sup> / min  
Drill Steel T45, T51

## JD-1400E (II)



Drilling Diameter 102 ~ 127 mm (4" ~ 5")  
Drifter 33hp / 25kw  
Air Flushing 14 m<sup>3</sup> / min  
Drill Steel T51

## JD-1500E / 1500L