

**SHANTUI**

# SE1250LC

Crawler Excavator



Engine Model: Weichai 8M33  
Gross Power: 680 kW/1800 rpm  
Operating Weight: 120,000kg

GET THE MOST FROM ONE MACHINE  
Positive flow system



# SE1250LC SPECIFICATIONS

## ENGINE

Model	Weichai 8M33
Type	Electronically controlled high-pressure common rail, water-cooled, V-shaped eight-cylinder, turbocharged
No. of cylinder	8
Displacement	26.1L
Power output	680kW/1800rpm

## HYDRAULIC SYSTEM

Max. discharge flow	3x560L/min
---------------------	------------

## DIGGING FORCE (ISO6015)

Bucket digging force	610kN
----------------------	-------

Arm digging force	532kN
-------------------	-------

## BUCKET

Bucket capacity	7.5-10m <sup>3</sup>
-----------------	----------------------

Bucket width	2737mm
--------------	--------

## TRAVEL SYSTEM

Travel motors	GR240H
---------------	--------

Support roller quantities	8X2
---------------------------	-----

Carrier roller quantities	3X2
---------------------------	-----

Travel shoes	49X2
--------------	------

Travel speed	2.4/3.5km/h
--------------	-------------

Drawbar pulling force	745N.m
-----------------------	--------

Grade ability	70% (35°)
---------------	-----------

## SWING SYSTEM

Swing speed	5.5r/min
-------------	----------

## REFILLING CAPACITIES

Fuel tank	1450L
-----------	-------

Cooling system	156L
----------------	------

Engine oil	100L
------------	------

Hydraulic oil tank	610L
--------------------	------

System Capacity	1350L
-----------------	-------

## OPERATING WEIGHT AND GROUND PRESSURE

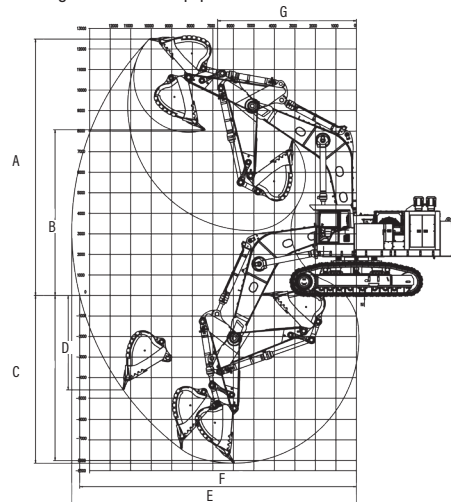
Shoe width	700mm
------------	-------

Ground pressure	147kPa
-----------------	--------

Operating weight	120000kg
------------------	----------

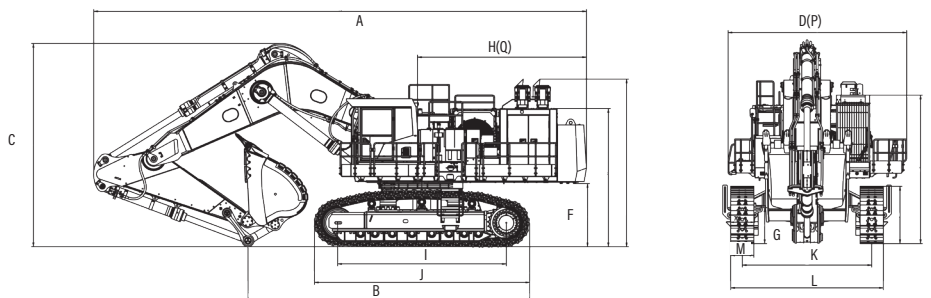
## SCOPE OF WORK (mm) (Boom: 7550 mm Arm: 3400 mm)

A	Max. digging height	12480
B	Max. dumping height	8065
C	Max. digging depth	8165
D	Max. vertical digging depth	4600
E	Max. digging distance	13875
F	Max. digging radius at ground level	13485
G	Min. swing radius of work equipment	6765



## DIMENSIONS (mm)

A	Overall length	14845
B	Ground contact length (Transportation)	8490
C	Overall height(to top of boom)	6130
D	Overall width	5385
E	Overall height(to top of cab)	5060/4475
F	Counter weight ground clearance	1900
G	Ground clearance	1070
H	Tail swing radius	5100
J	Track length	6500
K	Track gauge	3900
L	Track width	4600
M	Shoe width	700
P	Revolving frame width	3450/5305
Q	Distance from swivel center to tail	4960



\* THE SPECIFICATIONS ARE SUBJECT TO CHANGE WITHOUT NOTICE. THE PICTURES MAY INCLUDE OPTIONS. THE ACTUAL COLOR & APPEARANCE OF THE PRODUCT MAY DIFFER FROM WHAT IS SHOWN.



Shantui Social

**SHANTUI CONSTRUCTION MACHINERY CO., LTD.**

ADD: No. 58, G327 Highway, Jining City, Shandong, CHINA

TEL: +86-537-2909369

FAX: +86-537-2311219

EMAIL: trade@shantui.com

WEB: www.shantui.com

**SHANTUI**  
VALUE THAT WORKS